

Agrisera

This product is for research use only (not for diagnostic or therapeutic use)

contact: support@agrisera.com

Agrisera AB | Box 57 | SE-91121 Vännäs | Sweden | +46 (0)935 33 000 | www.agrisera.com

product **AS16 3168** **H3T3pK4me1 | Histone H3 (p Thr3, monomethylated Lys4)**

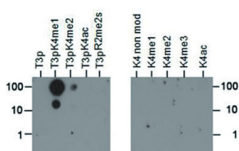
product information

Background	Methylation of lysine 4 on H3 (H3K4Me) and phosphorylation of threonine 3 (H3T3p) are known marks of transcriptional activation and mitosis. H3K4 has many known modifying enzymes (Set1, Set7/9, MLL, ASH1).
Immunogen	<u>KLH</u> -conjugated synthetic peptide
Host	Rabbit
Clonality	Polyclonal
Purity	Affinity purified serum
Format	Liquid
Quantity	50 µg
Storage	Store lyophilized/reconstituted at -20 °C; once reconstituted make aliquots to avoid repeated freeze-thaw cycles. Please, remember to spin tubes briefly prior to opening them to avoid any losses that might occur from lyophilized material adhering to the cap or sides of the tubes.
Tested applications	Dot blot (Dot), Immunofluorescence (IF), Immunohistochemistry (IHC), Western blot (WB)
Related products	AS16 3169 anti-H3T3pK4me2 Histone H3 (dimethyl Lys4, p Thr3), rabbit antibodies AS16 3172 anti-H3K4me3T6p H3 (trimethyl Lys4, p Thr6), rabbit antibodies AS16 3197 anti-anti-H3core, monoclonal antibodies AS15 2855 anti-H3 histone H3, chicken polyclonal antibodies AS10 710 anti-H3 histone H3, rabbit polyclonal antibodies AS10 710PRE H3 histone H3, pre-immune serum to H3 antibody AS10 710
Additional information	This antibody preparation is provided in 20 mM Potassium Phosphate pH 7.2, 150 mM NaCl, 0,01% sodium azide and 30% glycerol.

Application information

Recommended dilution	1 : 1000 (Dot), 1 : 100 (IF), 1 : 100 (IHC), 1 : 1000 (WB)
Expected apparent MW	15 kDa
Confirmed reactivity	Human
Predicted reactivity	<i>Caenorhabditis elegans</i> , <i>Drosophila melanogaster</i> , Mouse, Plant, Rat, <i>Xenopus sp.</i>
Not reactive in	No confirmed exceptions from predicted reactivity are currently known.
Additional information	
Selected references	To be added when available, antibody released in February 2016.

application example



Dot Blot using H3T3pK4me1 antibodies. Load: 1, 10, and 100 picomoles of the different peptides. Primary antibody used at a 1:1 000 dilution for

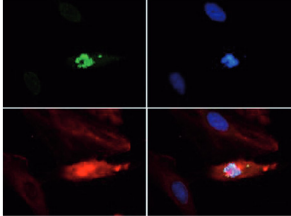
Agrisera

This product is **for research use only** (not for diagnostic or therapeutic use)

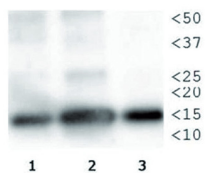
contact: support@agrisera.com

Agrisera AB | Box 57 | SE-91121 Vännäs | Sweden | +46 (0)935 33 000 | www.agrisera.com

45 min at 4°C. Secondary antibody: HRP rabbit secondary antibody at 1:40 000 for 45 min at RT.



Immunofluorescence using anti-H3T3pK4me1 antibodies. Tissue: HeLa cells. Fixation: 0.5% PFA. Primary antibody: used at a 1:100 dilution for 1 h at RT. Secondary antibody: Dylight 488 secondary antibody at 1:10 000 for 45 min at RT. Localization: Histone H3T3pK4me1 is nuclear and chromosomal. Staining: Histone H3T3pK4me1 is expressed in green while the nuclei and alpha-tubulin were coexpressed with DAPI (blue) and Dylight 550 (red).



Western Blot using anti-H3T3pK4me1 antibodies. Lane 1: HeLa histone extracts. Lane 2: NIH 3T3 histone extracts Lane 3. *C. elegans* embryo lysate. Load: 30 µg per lane. Primary antibody used at a 1:1 000 dilution overnight at 4°C. Secondary antibody: IRDye800™ rabbit secondary antibody at 1:10 000 for 45 min at RT.