

Agrisera

This product is for research use only (not for diagnostic or therapeutic use)

contact: support@agrisera.com

Agrisera AB | Box 57 | SE-91121 Vännäs | Sweden | +46 (0)935 33 000 | www.agrisera.com

Product no **AS16 3170**

H3T3pK4ac | Histone H3 (ac Lys4, p Thr3)

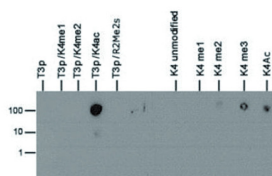
Product information

Immunogen	KLH-conjugated synthetic acetylated/phosphorylated peptide surrounding Lysine 4 and Threonine 3 of human Histone H3
Host	Rabbit
Clonality	Polyclonal
Purity	Affinity purified serum
Format	Liquid
Quantity	50 µg
Storage	Store lyophilized/reconstituted at -20 °C; once reconstituted make aliquots to avoid repeated freeze-thaw cycles. Please, remember to spin tubes briefly prior to opening them to avoid any losses that might occur from lyophilized material adhering to the cap or sides of the tubes.
Additional information	This antibody preparation is provided in 20 mM Potassium Phosphate pH 7.2, 150 mM NaCl, 0.01% sodium azide and 30% glycerol.

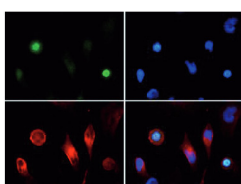
Application information

Recommended dilution	2-5 µg/million cells (ChIP), 1 : 1000 (Dot), 1 : 100 (IF), 1 : 50 (IHC), 1 : 500 (WB)
Expected apparent MW	15 kDa
Confirmed reactivity	Caenorhabditis elegans, Human
Predicted reactivity	Chicken, <i>Drosophila melanogaster</i> , Mouse, Plant, Rat, <i>Xenopus sp.</i>
Not reactive in	No confirmed exceptions from predicted reactivity are currently known.

application example



Dot Blot using anti-H3T3pK4ac antibodies. Lane 1: T3p. Lane 2: T3pK4me1. Lane 3: T3pK4me2. Lane 4: T3pK4ac. Lane 5: T3pR2me2s. Lane 6: K4 unmodified. Lane 7: K4me1. Lane 8: K4me2. Lane 9: K4me3. Lane 10: K4ac. Load: 1, 10, and 100 picomoles of peptide. Primary antibody used at 1:1,000 dilution for 45 min at 4 °C. Secondary antibody: Dylight®488 rabbit secondary antibody at 1:10 000 for 45 min at RT.



Immunofluorescence using anti-H3T3pK4ac antibodies. Tissue: HeLa cells. Fixation: 0.5% PFA. Primary antibody used at a 1:100 dilution for 1 h at RT. Secondary antibody: Dylight® 488 secondary antibody at 1:10 000 for 45 min at RT. Localization: Histone H3T3pK4ac is nuclear and chromosomal. Staining: H3T3pK4ac is expressed in green while the nuclei and alpha-tubulin were coexpressed with DAPI (blue) and Dylight®

Agrisera

This product is **for research use only** (not for diagnostic or therapeutic use)

contact: support@agrisera.com

Agrisera AB | Box 57 | SE-91121 Vännäs | Sweden | +46 (0)935 33 000 | www.agrisera.com

550 (red).



Western Blot using anti-phospho-acetyl-Histone H3 antibodies (H3T3pK4ac). Lane 1: HeLa histone extracts. Lane 2. NIH-3T3 histone extracts. Lane 3: *C. elegans* embryo lysate. Load: 30 µg per lane. Primary antibody used at 1:500 overnight at 4 °C. Secondary antibody: IRDye800™ rabbit secondary antibody at 1:10 00 for 45 min at RT.