

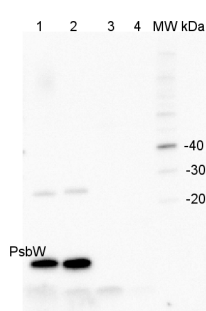
Product no **AS05 060****Anti-PsbW | Small subunit W of PSII****Product information**

Immunogen	KLH-conjugated synthetic peptide derived from PsbW protein sequence of <i>Arabidopsis thaliana</i> Uniprot: Q39194 , TAIR: At2g30570
Host	Rabbit
Clonality	Polyclonal
Purity	Serum
Format	Lyophilized
Quantity	100 µl
Reconstitution	For reconstitution add 100 µl of sterile water
Storage	Store lyophilized/reconstituted at -20°C; once reconstituted make aliquots to avoid repeated freeze-thaw cycles. Please remember to spin the tubes briefly prior to opening them to avoid any losses that might occur from material adhering to the cap or sides of the tube.

Application information**Recommended dilution** | 1 : 15 000 (WB)**Expected | apparent MW** | 13.6 | 6.1 kDa**Confirmed reactivity** | *Arabidopsis thaliana*, *Hordeum vulgare*, *Nicotiana tabacum*, *Spinacia oleracea***Predicted reactivity** | *Oryza sativa*, *Physcomitrium patens*, *Zea mays*, *Vitis vinifera*Species of your interest not listed? [Contact us](#)**Not reactive in** | *Chlamydomonas reinhardtii*, *Synechococcus* sp. PCC 7942

Selected references | [Ilse et al. \(2025\)](#). A point mutation in the photosystem II protein PsbW disrupts thylakoid organization and alters starch granule formation. *Plant Physiol.* 2025 May 30;198(2):kiaf206. doi: 10.1093/plphys/kiaf206.

[Hackett et al. \(2017\)](#). An Organelle RNA Recognition Motif Protein Is Required for Photosystem II Subunit psbF Transcript Editing. *Plant Physiol.* 2017 Apr;173(4):2278-2293. doi: 10.1104/pp.16.01623.



2 µg of total protein from (1) *Arabidopsis thaliana* leaf, (2) *Hordeum vulgare* leaf, (3) *Chlamydomonas reinhardtii* total cell, (4) *Synechococcus* sp. 7942 total cell were all extracted with PEB ([AS08 300](#)) and separated on **4-12% NuPage (Invitrogen) LDS-PAGE** and blotted 1h to **PVDF**. Blots were blocked immediately following transfer in 2% blocking reagent in 20 mM Tris, 137 mM sodium chloride pH 7.6 with 0.1% (v/v) Tween-20 (TBS-T) for 1h at room temperature with agitation. Blots were incubated in the primary antibody at a dilution of 1: 50 000 for 1h at room temperature with agitation. The antibody solution was decanted and the blot was rinsed briefly twice, then washed once for 15 min and 3 times for 5 min in TBS-T at room temperature with agitation. Blots were incubated in secondary antibody (anti-rabbit IgG horse radish peroxidase conjugated) diluted to 1:50 000 in 2% blocking solution for 1h at room temperature with agitation. The blots were washed as above and developed for 5 min with ECL Advance detection reagent according to the manufacturers instructions. Images of the blots were obtained using a CCD imager (FluorSMax, Bio-Rad) and Quantity One software (Bio-Rad). Exposure time was 1 second.