

Product no **AS06 113**

## PsbF | beta subunit of Cytochrome b559 of PSII

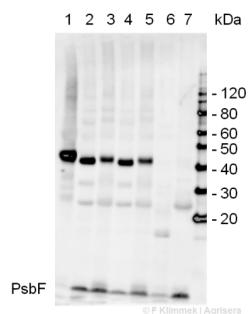
### Product information

<b>Immunogen</b>	KLH-conjugated synthetic peptide derived from plant PsbF sequences including <i>Arabidopsis thaliana</i> <a href="#">P62095</a> , <a href="#">AtCg00570</a>
<b>Host</b>	Rabbit
<b>Clonality</b>	Polyclonal
<b>Purity</b>	Serum
<b>Format</b>	Lyophilized
<b>Quantity</b>	200 µl
<b>Reconstitution</b>	For reconstitution add 200 µl of sterile water.
<b>Storage</b>	Store lyophilized/reconstituted at -20°C; once reconstituted make aliquots to avoid repeated freeze-thaw cycles. Please, remember to spin tubes briefly prior to opening them to avoid any losses that might occur from lyophilized material adhering to the cap or sides of the tubes.
<b>Additional information</b>	This product can be sold containing ProClin if requested.

### Application information

<b>Recommended dilution</b>	1 : 1000 (WB)
<b>Expected   apparent MW</b>	4 kDa
<b>Confirmed reactivity</b>	<i>Arabidopsis thaliana</i> , <i>Pisum sativum</i> , <i>Triticum aestivum</i>
<b>Predicted reactivity</b>	<i>Cannabis sativa</i> , <i>Nicotiana tabacum</i> , <i>Pinus sylvestris</i> , <i>Populus tremula</i> Species of your interest not listed? <a href="#">Contact us</a>
<b>Not reactive in</b>	<i>Chlamydomonas reinhardtii</i> , cyanobacteria
<b>Additional information</b>	This antibody works better on thylakoid and chloroplast fractions than on a total cell extract. For high resolution images, please visit the specific product page at <a href="http://www.agrisera.com">www.agrisera.com</a>
<b>Selected references</b>	<a href="#">Hackett et al. (2017)</a> . An Organelle RNA Recognition Motif Protein Is Required for Photosystem II Subunit psbF Transcript Editing. <i>Plant Physiol.</i> 2017 <a href="#">Yang-Er Chen et al. (2017)</a> . Responses of photosystem II and antioxidative systems to high light and high temperature co-stress in wheat. <i>J. of Exp. Botany</i> , Volume 135, March 2017, Pages 45–55. <a href="#">Nishimura et al. (2016)</a> . The N-terminal sequence of the extrinsic PsbP protein modulates the redox potential of Cyt b559 in photosystem II. <i>Sci Rep.</i> 2016 Feb 18;6:21490. doi: 10.1038/srep21490. <a href="#">Lucinski et al. (2011)</a> . Involvement of Deg5 protease in wounding-related disposal of PsbF apoprotein. <i>Plant Physiol Biochem.</i> 49(3):311-20. <a href="#">Garcia-Cerdan et al. (2008)</a> . Antisense inhibition of the PsbX protein affects PSII integrity in the higher plant <i>Arabidopsis thaliana</i> . <i>Plant Cell Physiol</i> 50: 191-202

### Application example



**5µg protein** of *Arabidopsis thaliana* (1) leaf, extracted with PEB ([AS08 300](#)), (2) chloroplasts (normal light), (3) thylakoids (extracted from 2), (4) chloroplasts (high light), (5) thylakoids (extracted from 4), (6) Photosystem I, and (7) BBY particles (enriched in Photosystem II) from pea were separated on **4-12% NuPage** (Invitrogen) LDS-PAGE and blotted 1.5h (30V) to nitrocellulose. Filters were blocked 1h with 2% low-fat **milk powder in TBS-T** (0.1% TWEEN 20) and probed with AS06 113 (1:1000, 1h) and secondary anti-rabbit (1:20000, 1 h) antibody (HRP conjugated)

in TBS-T containing 2% low fat milk powder. Antibody incubations were followed by **washings in TBS-T** (15, +5, +5, +5 min). All steps were performed at **RT with agitation**. Signal was detected with chemiluminescent detection reagent, using a Fuji LAS-3000 CCD (150s, high sensitivity). The PsbF protein is detected with an **apparent mass of < 10 kDa**.  
With this protocol, there is a cross-reaction with a target at ~43 kDa.