

Agrisera

This product is for research use only (not for diagnostic or therapeutic use)

contact: support@agrisera.com

Agrisera AB | Box 57 | SE-91121 Vännäs | Sweden | +46 (0)935 33 000 | www.agrisera.com

Product no **AS06 115**
PsbZ | ycf9 protein of PSII

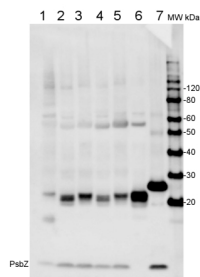
Product information

Immunogen	KLH-conjugated synthetic peptide derived from PsbZ protein sequence of <i>Arabidopsis thaliana</i> (AtCg00300). This sequence is highly conserved in dicots, monocots, and <i>Physcomitrella patens</i> but only weakly in <i>Chlamydomonas reinhardtii</i> .
Host	Rabbit
Clonality	Polyclonal
Purity	Serum
Format	Lyophilized
Quantity	200 µl
Reconstitution	For reconstitution add 200 µl of sterile water
Storage	Store lyophilized/reconstituted at -20 °C; once reconstituted make aliquots to avoid repeated freeze-thaw cycles. Please, remember to spin tubes briefly prior to opening them to avoid any losses that might occur from lyophilized material adhering to the cap or sides of the tubes.

Application information

Recommended dilution	1 : 1000 (WB)
Expected apparent MW	6.5 6.5 kDa for <i>Arabidopsis thaliana</i>
Confirmed reactivity	<i>Arabidopsis thaliana</i> , <i>Pisum sativum</i>
Predicted reactivity	Dicots, <i>Physcomitrella patens</i>
	Species of your interest not listed? Contact us
Not reactive in	Cyanobacteria

Application example



5 µg of total protein from (1) *Arabidopsis thaliana* leaf extracted with PEB ([AS08 300](#)), (2) chloroplast, (3) thylakoids, (4) chloroplasts from high light treated plants, (5) thylakoids from high light treated plants, (6) PSI preparation, (7) *Pisum sativum* BBY particles were separated on **4-12%** NuPage (Invitrogen) **LDS-PAGE** and blotted 1h to **nitrocellulose**. Filters were blocked 1h with 2% low-fat **milk powder** in TBS-T (0.1% TWEEN 20) and probed with anti-PsbZ (AS06 115, **1:1000**, 1h) and secondary anti-rabbit (**1:20000**, 1 h) antibody (HRP conjugated) in TBS-T containing 2% low fat milk powder. Antibody incubations were followed by washings in TBS-T (15, +5, +5, +5 min). All steps were performed at RT with agitation. Signal was detected with chemiluminescent detection reagent, using a Fuji LAS-3000 CCD (240s, standard sensitivity). There is a strong cross-reaction between 20-30 kDa.