

Agrisera

This product is for research use only (not for diagnostic or therapeutic use)

contact: support@agrisera.com

Agrisera AB | Box 57 | SE-91121 Vännäs | Sweden | +46 (0)935 33 000 | www.agrisera.com

Product no **AS09 486**

Ca²⁺-ATPase | Calmodulin-stimulated calcium-ATPase

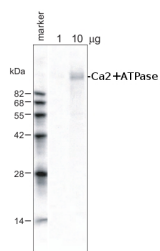
Product information

Immunogen	KLH-conjugated synthetic peptide derived from <i>Brassica oleracea</i> calmodulin-stimulated calcium-ATPase UniProt: P93067
Host	Rabbit
Clonality	Polyclonal
Purity	Serum
Format	Lyophilized
Quantity	100 µl
Storage	Store lyophilized/reconstituted at -20 °C; make aliquots to avoid repeated freeze-thaw cycles. Please, remember to spin tubes briefly prior to opening them to avoid any losses that might occur from material adhering to the cap or sides of the tubes.
Additional information	0.1 % sodium azide is added as preservative. For antibody re-suspending information check the tube label. This protein is of low abundance in plant tissues.

Application information

Recommended dilution	1 : 8000 (ELISA), 1 : 1000 (WB)
Expected apparent MW	111 110 kDa (<i>Raphanus sativus</i>)
Confirmed reactivity	<i>Arabidopsis thaliana</i> , <i>Brassica oleracea</i> , <i>Raphanus sativus</i>
Predicted reactivity	<i>Oryza sativa</i> , <i>Physcomitrella patens</i> , <i>Populus balsamifera</i> , <i>Triticum aestivum</i> , <i>Vitis vinifera</i> Species of your interest not listed? Contact us
Not reactive in	No confirmed exceptions from predicted reactivity are currently known.
Additional information	Protein or membrane sample should be treated at 70 °C for 10 min before loading on the gel. For high resolution images, please visit the specific product page at www.agrisera.com
Selected references	Siddiqui et al. (2020) . Melatonin and calcium function synergistically to promote the resilience through ROS metabolism under arsenic-induced stress. <i>Journal of Hazardous Materials</i> Volume 398, 5 November 2020, 122882

Application example



1 µg and 10 µg of crude membrane fraction/lane from *Raphanus sativus* L. Tokinashi-daikon were separated on 12 % SDS-PAGE and blotted 1h to PVDF membrane (40 min. at 10 V using BioRad semidry transfer). Filters were blocked 1h with 5 % low-fat milk powder in TBS-T (0.05%

Agrisera

This product is **for research use only** (not for diagnostic or therapeutic use)

contact: support@agrisera.com

Agrisera AB | Box 57 | SE-91121 Vännäs | Sweden | +46 (0)935 33 000 | www.agrisera.com

Triton X.100). Membranes were washed 5 times with TBS-T, each time in a fresh polystyrene box and probed with anti-Ca²⁺ ATPase antibodies (AS09 486, **1:1000**, 1h) and secondary anti-rabbit (**1:2000**, 1 h). All steps were performed in RT with agitation.