

Agrisera

This product is for research use only (not for diagnostic or therapeutic use)

contact: support@agrisera.com

Agrisera AB | Box 57 | SE-91121 Vännäs | Sweden | +46 (0)935 33 000 | www.agrisera.com

Product no **AS13 2701**
Capsaicin receptor

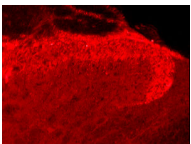
Product information

Immunogen	A synthetic peptide of human capsaicin receptor protein conjugated to KLH has been used as the immunogen.
Host	Rabbit
Clonality	Polyclonal
Purity	Serum
Format	Lyophilized
Quantity	100 µl
Reconstitution	For reconstitution add 100 µl of sterile water.
Storage	After reconstitution keep aliquots at -20°C for a higher stability, and at 4°C with an appropriate antibacterial agent. Glycerol (1:1) may be added for an additional stability. Avoid repetitive freeze/thaw cycles.

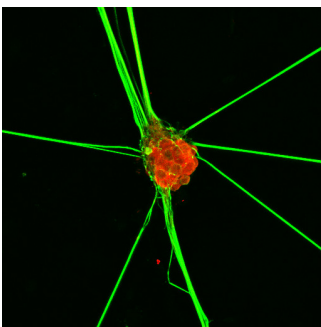
Application information

Recommended dilution	1 : 1000-1 : 2000 (IHC)
Confirmed reactivity	Human, Mouse, Rat
Selected references	Jones et al. (2018) . Development and validation of an in vitro model system to study peripheral sensory neuron development and injury. <i>Sci Rep.</i> 2018 Oct 29;8(1):15961. doi: 10.1038/s41598-018-34280-3.

Application example



Immunohistochemical staining of rat spinal cord using rabbit antibody to human capsaicin receptor, catalog number AS13 2701.



Immunohistochemistry showing capsaicin receptor (TRPV1, red) and neurofilament-heavy chain (NFL, green) reactivity in nociceptive sensory neurons derived from hESC. Fixation: 4% PFA 10 min. on ice. Blocking: 10% FCS/PBST for 1h at RT Primary: 1:100 in blocking solution for 1h at RT Secondary: 1:500 in blocking solution for 1h at RT, secondary antibodies: donkey anti-mouse 488 and donkey anti-rabbit 568.

Courtesy of Dr. Iwan Jones, Umeå University, Sweden