

Agrisera

This product is for research use only (not for diagnostic or therapeutic use)

contact: support@agrisera.com

Agrisera AB | Box 57 | SE-91121 Vännäs | Sweden | +46 (0)935 33 000 | www.agrisera.com

product **AS14 2783**

SnRK2.2, SnRK2.3, SnRK2.6 | Ser/Thr-protein kinase SnRK

product information

Background	SnRK2.2, SnRK2.3, SnRK2.6 are members of SNF1-related protein kinases whose activity is activated by ionic (salt) and non-ionic (mannitol) osmotic stress. Involved in ABA signalling pathway. Alternative names: OST1-kinase-like 2, Protein ATHPROKIN B, SNF1-related kinase 2.3, SnRK2.3, Protein OPEN STOMATA 1 SNF1-related kinase 2.6, SnRK2.6, Serine/threonine-protein kinase OST1, OST1-kinase-like 3, Protein ATHPROKIN A, SNF1-related kinase 2.2, SnRK2.2
Immunogen	KLH-conjugated synthetic peptide derived from <i>Arabidopsis thaliana</i> SnRK2.2 UniProt: Q39192 , TAIR: At3g50500 , SnRK2.3, UniProt: Q39193 TAIR: At5g66880 , SnRK2.6 UniProt: Q940H6 , TAIR: At4g33950
Host	Rabbit
Clonality	Polyclonal
Purity	Affinity purified serum in PBS, pH 7.4
Format	Lyophilized in PBS pH 7.4
Quantity	50 µg
Reconstitution	For reconstitution add 50 µl of sterile water.
Storage	Store lyophilized/reconstituted at -20 °C; once reconstituted make aliquots to avoid repeated freeze-thaw cycles. Please, remember to spin tubes briefly prior to opening them to avoid any losses that might occur from lyophilized material adhering to the cap or sides of the tubes.
Tested applications	Western blot (WB)
Related products	AS13 2635 SRK2E Ser/Thr-protein kinase SnRK2.6 AS12 1855 anti-S6K1/2 Ribosomal S6 kinase 1/2, rabbit antibodies AS13 2664 anti-S6K1-2 Ribosomal-protein S6 kinase homolog 1,2 - phosphorylated, rabbit antibodies Plant protein extraction buffer Secondary antibodies

Application information

Recommended dilution	1 : 1000 (WB)
Expected apparent MW	41 kDa
Confirmed reactivity	<i>Arabidopsis thaliana</i>
Predicted reactivity	<i>Brassica oleracea</i> , <i>Glycine max</i> , <i>Medicago sativa</i> , <i>Morsu notabilis</i> , <i>Oryza sativa</i> , <i>Phaseolus vulgaris</i> , <i>Populus</i> sp., <i>Triticum</i> sp., <i>Vicia faba</i>
Not reactive in	<i>Chlamydomonas reinhardtii</i>
Additional information	
Selected references	to be added when available, antibody released in September 2015

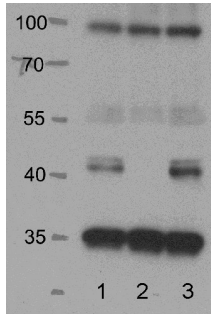
Agrisera

This product is **for research use only** (not for diagnostic or therapeutic use)

contact: support@agrisera.com

Agrisera AB | Box 57 | SE-91121 Vännäs | Sweden | +46 (0)935 33 000 | www.agrisera.com

application example



20 μ g of total protein from two-week-old seedling of *Arabidopsis thaliana* Col-0 (1), snrk2.2/3/6 (2), snrk1/4/5/7/8/9/10 (3) extracted with kinase buffer were separated on 10 % SDS-PAGE and blotted 30 min to PVDF using semi-dry. Blots were blocked with 5% skim milk in TBST for 1h at room temperature (RT) with agitation. Blot was incubated in the primary antibody at a dilution of 1 : 5000 in 0.5% TBST for overnight at 4 oC with agitation. The antibody solution was decanted and the blot was washed 3 times for 10 min in TBS-T at RT with agitation. Blot was incubated in secondary antibody (anti-rabbit IgG goat peroxidase conjugated, from Bio-Rad) diluted to 1 : 5 000 in 0.5 % TBST for 1h at RT with agitation. The blot was washed as above and developed for 5 min with ECL according to the manufacturer's instructions. Exposure time was 30 seconds.

Dr. Pengcheng Wang, Purdue University, USA