

# Agrisera

This product is for research use only (not for diagnostic or therapeutic use)

contact: [support@agrisera.com](mailto:support@agrisera.com)

Agrisera AB | Box 57 | SE-91121 Vännäs | Sweden | +46 (0)935 33 000 | [www.agrisera.com](http://www.agrisera.com)

Product no **AS16 3171**

## H3K4me1T6p | Histone H3 (monomethylated Lys4, p Thr6)

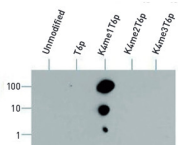
### Product information

<b>Immunogen</b>	KLH-conjugated synthetic peptide
<b>Host</b>	Rabbit
<b>Clonality</b>	Polyclonal
<b>Purity</b>	Affinity purified serum
<b>Format</b>	Liquid
<b>Quantity</b>	50 µg
<b>Storage</b>	Store lyophilized/reconstituted at -20°C; once reconstituted make aliquots to avoid repeated freeze-thaw cycles. Please, remember to spin tubes briefly prior to opening them to avoid any losses that might occur from lyophilized material adhering to the cap or sides of the tubes.
<b>Additional information</b>	This antibody preparation is provided in 20 mM Potassium Phosphate pH 7.2, 150 mM NaCl, 0,01% sodium azide and 30% glycerol.

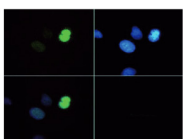
### Application information

<b>Recommended dilution</b>	2-5 µg/million cells (ChIP), 1 : 1000 (Dot), 1 : 50 (IF), 1 : 50 (IHC), 1 : 500 (WB)
<b>Expected   apparent MW</b>	15 kDa
<b>Confirmed reactivity</b>	Human
<b>Predicted reactivity</b>	<i>Caenorhabditis elegans</i> , <i>Drosophila melanogaster</i> , Mouse, Plant, Rat, <i>Xenopus sp.</i>
<b>Not reactive in</b>	No confirmed exceptions from predicted reactivity are currently known.

#### application example



**Dot blot** using anti-H3K4me1T6p antibodies. Load: 1, 10, and 100 picomoles of peptide. Primary antibody used at a 1:1 000 dilution for 45 min at 4°C. Secondary antibody: Dylight@488 rabbit secondary antibody at 1:10 000 for 45 min at RT.



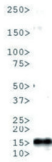
**Immunofluorescence** using anti- H3K4me1T6p antibodies. Tissue: HeLa cells. Fixation: 0.5% PFA. Primary antibody used at a 1:50 dilution for 1 h at RT. Secondary antibody: FITC secondary antibody at 1:10 000 for 45 min at RT. Localization: Histone H3K4me1T6p is nuclear and chromosomal. Staining: H3K4me1T6p is expressed in green and the nuclei are counterstained with DAPI (blue).

# Agrisera

This product is **for research use only** (not for diagnostic or therapeutic use)

contact: [support@agrisera.com](mailto:support@agrisera.com)

Agrisera AB | Box 57 | SE-91121 Vännäs | Sweden | +46 (0)935 33 000 | [www.agrisera.com](http://www.agrisera.com)



**Western Blot** using anti-Rabbit H3K4me1T6p antibodies. 30  $\mu$ g of *C. elegans* embryonic lysate. Primary antibody used at a 1:500 dilution overnight at 4°C. Secondary antibody: IRDye800™ rabbit secondary antibody at 1:10 000 for 45 min at RT.



**Western Blot** using anti-H3K4me1T6p antibodies. 30  $\mu$ g of HeLa histone extracts per lane. Primary antibody used at a 1:500 dilution overnight at 4°C. Secondary antibody: IRDye800™ rabbit secondary antibody at 1:10 000 for 45 min at RT.