

Agrisera

This product is for research use only (not for diagnostic or therapeutic use)

contact: support@agrisera.com

Agrisera AB | Box 57 | SE-91121 Vännäs | Sweden | +46 (0)935 33 000 | www.agrisera.com

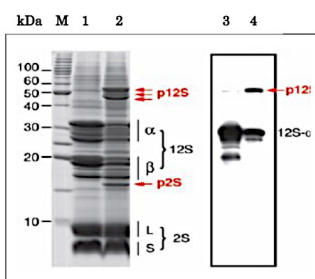
Product no **AS20 4403** 12S seed storage protein CRC

Product information

Immunogen	Native, 12S globulin alpha subunit purified from <i>Arabidopsis thaliana</i> and excised from SDS-PAGE gel. UniProt: Q96318 , TAIR: At4g28520
Host	Rabbit
Clonality	Polyclonal
Purity	Total IgG, purified on Protein A/G
Format	Liquid at 2 mg/ml in PBS, 50% glycerol. Filter sterilized. No preservative or carrier protein.
Quantity	200 µg
Storage	Store at -20°C; once make aliquots to avoid repeated freeze-thaw cycles. Please, remember to spin tubes briefly prior to opening them to avoid any losses that might occur from material adhering to the cap or sides of the tubes.

Application information

Recommended dilution	assay dependent (ELISA), 1: 50 (IL by electron microscopy), 1: 100 (IHC), 1: 3000 - 1: 10 000 (WB)
Expected apparent MW	58 30 kDa (alpha subunit)
Confirmed reactivity	<i>Arabidopsis thaliana</i>
Predicted reactivity	Species of your interest not listed? Contact us
Not reactive in	No confirmed exceptions from predicted reactivity are currently known.
Selected references	Shirakawa et al. (2014) . CONTINUOUS VASCULAR RING (COV1) is a trans-Golgi network-localized membrane protein required for Golgi morphology and vacuolar protein sorting. <i>Plant Cell Physiol.</i> 2014 Apr;55(4):764-72.doi: 10.1093/pcp/pct195. (Immunohistochemistry, Western blot) Li et al. MAG2 and three MAG2-INTERACTING PROTEINs form an ER-localized complex to facilitate storage protein transport in <i>Arabidopsis thaliana</i> . <i>Plant J.</i> 2013 Dec;76(5):781-91.doi: 10.1111/tpj.12347. (Immunolocalisation by electron microscopy, Western blot)



Arabidopsis thaliana dry seed extract from wild-type (1) and *atvst1-1* mutant (defective in storage protein transport) (2) (SDS-PAGE, stained gel) Western blot of the same samples (3,4) which were separated on 15-20 % SDS-PAGE and blotted to PVDF membrane in wet system. Blot was blocked with 3 % skim milk/TBS-T, 1h/RT with agitation. Blot was incubated in the primary antibody at a dilution of 1: 5000 in TBS-T for 1h/RT. The antibody solution was decanted and the blot was washed 4 times for 10 min in TBS-T at RT with agitation. Blot was incubated in matching secondary antibody (anti-rabbit IgG horse radish peroxidase conjugated) diluted to 1:10 000 in for 1h/RT with agitation. The blot was washed as above and developed with a chemiluminescent detection reagent, following manufacturer's recommendations. P12S is the precursor of 12S globulin. 12S-alpha is the alpha-subunit (proteolytically form of 12S) of 12S globulin.