

Agrisera

This product is for research use only (not for diagnostic or therapeutic use)

contact: support@agrisera.com

Agrisera AB | Box 57 | SE-91121 Vännäs | Sweden | +46 (0)935 33 000 | www.agrisera.com

Product no **AS15 2871**

DYKDDDDK (binds to Sigma FLAG®, clone FG4R)

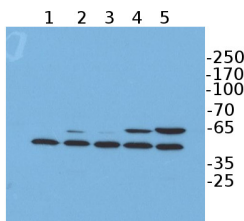
Product information

Immunogen	KLH-conjugated DYKDDDDK (FLAG) synthetic peptide
Host	Mouse
Clonality	Monoclonal
Subclass/isotype	IgG1
Purity	Protein A purified
Format	Liquid in 10mM PBS, pH 7.2, with 1% BSA and 0.05% sodium azide
Quantity	50 µg
Storage	Store at -20°C for up to 2 years.
Additional information	Working dilution for Dot Blot, ELISA and IP needs to be determined experimentally. Antibody is purified on Protein A.

Application information

Recommended dilution	1 : 1000-5000 (1-5ng) (WB) (incubate for one hour at room temperature). 1 : 500-1 :2000 (IS) For best results with other assays (Dot, ELISA, IP), please determine optimal working dilution by end user
Confirmed reactivity	N-terminal, C-terminal or internal DYKDDDDK-tagged fusion proteins
Not reactive in	No confirmed exceptions from predicted reactivity are currently known.

application example



20 µg of total protein from *Chlamydomonas reinhardtii* Flag; 2 (1) 1xFlag 5'+ICL (1x FLAG coding sequence : GA-CTA-CAA-GGA-CGA-CGA-TGA-CAA-G) (2); 1xFlag 5'+ICL (1x FLAG codingsequence : GA-CTA-CAA-GGA-CGA-CGA-TGA-CAA-G) (3); ICL+ 3xFlag 3'end (3xFLAG codingsequence : GAC TAC AAG GAC CAC GAC GGT GAC TAC AAG GAC CAC GAC ATC GAC TAC AAG GAC GACGACGAC AAG TGA.) (4); 1xFlag 5'+ICL+ 3xFlag 3'end (5) were separated on 12 % SDS-PAGE and blotted ON (30V) to PVDF using tank transfer. Blots were blocked with 5 % non-fat milk for 1h at room temperature (RT) with agitation. Blot was incubated in the primary antibody at a dilution of 1 : 5 000 for 1h at RT with agitation. The antibody solution was decanted and the blot was rinsed briefly twice, then washed once for 15 min and 3 times for 5 min in TBS-T at RT with agitation. Blot was incubated in secondary antibody (anti-mouse IgG horse radish peroxidase conjugated) diluted to 1:10 000 in for 1h at RT with agitation. The blot was washed as above and developed for 5 min with BM ECL kit according to the manufacturer's instructions. Exposure time was seconds.

Courtesy of Dr. Nadine Coosemans, Remacle lab, University of Liège, Belgium