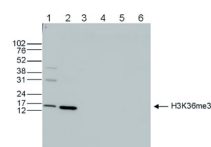


Product no **AS16 3196****Anti-H3K36me3 | Histone H3 trimethylated lysine 36 (ChIP grade)****Product information****Immunogen** | KLH-conjugated synthetic peptide**Host** | Rabbit**Clonality** | Polyclonal**Purity** | Immunogen affinity purified serum.**Format** | Liquid**Quantity** | 50 µg**Storage** | Store lyophilized/reconstituted at -20°C; once reconstituted make aliquots to avoid repeated freeze-thaw cycles. Please remember to spin the tubes briefly prior to opening them to avoid any losses that might occur from material adhering to the cap or sides of the tube.**Additional information** | Antibody is provided in PBS containing 0.05% azide and 0.05% ProClin 300**Application information****Recommended dilution** | 0.5-5 µg/IP (ChIP-seq), 1 : 20 000 (Dot), 1 : 4000 (ELISA), 1 : 500 (IF), 1 : 10 000 (PA), 1 : 1000 (WB)**Expected | apparent MW** | 15 kDa**Confirmed reactivity** | Human**Predicted reactivity** | *Arabidopsis thaliana*, Mouse, *Oryza sativa***Not reactive in** | No confirmed exceptions from predicted reactivity are currently known**Additional information** | Antibody solution contains PBS with 0.05% sodium azide and 0.05% ProClin 300**application example**

**Western blot** was performed on whole cell (25 µg, lane 1) and histone extracts (15 µg, lane 2) from HeLa cells, and on 1 µg of recombinant histone H2A, H2B, H3 and H4 (lane 3, 4, 5 and 6, respectively). Anti-H3K36me3 | Histone H3 trimethylated lysine 36 (ChIP grade) antibodies were diluted 1:1 000 in TBS-Tween containing 5% skimmed milk.