

Agrisera

This product is for research use only (not for diagnostic or therapeutic use)

contact: support@agrisera.com

Agrisera AB | Box 57 | SE-91121 Vännäs | Sweden | +46 (0)935 33 000 | www.agrisera.com

product **AS16 4094**

RPS14 | Ribosomal protein S14 (mitochondrial)

product information

| | |
|----------------------------|---|
| Background | RPS14 Ribosomal protein S14 (mitochondrial) is a structural constituent of ribosome and is localized in mitochondria. |
| Immunogen | KLH-conjugated synthetic peptide chosen from <i>Arabidopsis thaliana</i> RPS14 protein sequence. UniProt: O64695 TAIR: |
| Host | Rabbit |
| Clonality | Polyclonal |
| Purity | Affinity purified serum in PBS, pH 7.4 |
| Format | Lyophilized |
| Quantity | 50 µg |
| Reconstitution | For reconstitution add 50 µl of sterile water. |
| Storage | Store lyophilized/reconstituted at -20 °C; make aliquots to avoid repeated freeze-thaw cycles. |
| Tested applications | Western blot (WB) |
| Related products | AS13 2650 anti-L13-1 60S ribosomal protein L13-1, rabbit antibodies AS09 478 anti-L13-1 60S ribosomal protein L13-1, rabbit antibodies AS08 331 anti-L-30 50S ribosomal protein L30, rabbit antibodies AS11 1738 anti-Rpl1 50S ribosomal protein L1, rabbit antibodies AS15 2876 anti-RPL2 ribosomal protein L2 (chloroplastic), rabbit antibodies AS14 2780 anti-RPL33 50S ribosomal protein L33, chloroplastic, rabbit antibodies AS14 2781 anti-RPL36 50S ribosomal protein L36, chloroplastic, rabbit antibodies AS12 2115 anti-RPL37 ribosomal protein L37, cytoplasmic, rabbit antibodies AS15 2875 anti-RPS1 ribosomal protein S1 (chloroplastic), rabbit antibodies AS12 2114 anti-RPS12 ribosomal protein S12, (chloroplastic), rabbit antibodies AS14 2779 anti-RPS15 30S ribosomal protein S15, (chloroplastic), rabbit antibodies AS10 719 anti-Rps2 anti-ribosomal subunit 2 (cytoplasmic), rabbit antibodies AS16 3832 Anti-RPS2 Ribosomal protein S2 (mitochondrial), rabbit antibodies AS08 309 anti-S1 anti-30S ribosomal protein S1, rabbit antibodies AS12 2111 anti-S14 40S ribosomal protein S14-1, rabbit antibodies AS15 3068 anti-S4 mitochondrial ribosomal small subunit protein S4, rabbit antibodies AS15 3067 anti-S10 mitochondrial ribosomal small subunit protein S10, rabbit antibodies AS15 3069 anti-L16 mitochondrial ribosomal large subunit protein L16, rabbit antibodies antibodies to proteins involved in translation |

Application information

| | |
|-------------------------------|--|
| Recommended dilution | 1 : 1000 (WB) |
| Expected apparent MW | 15.6 16 kDa |
| Confirmed reactivity | <i>Arabidopsis thaliana</i> |
| Predicted reactivity | <i>Amborella trichopoda, Anthurium amnicola, Brassica juncea, Brassica oleracea var. botrytis, Capsella rubella, Carica papaya, Castilleja paramensis, Cycas taitungensis, Eruca sativa, Erythranthe guttata, Eschscholzia californica, Flagellaria indica, Glycine max, Gossypium raimondii, Guzmania lingulata, Heuchera parviflora var. saurensis, Hesperelaea palmeri, Liriodendron tulipifera, Luzula sylvatica, Medicago truncatula, Nelumbo nucifera, Nicotiana tabacum, Nymphaea tetragona, Oenothera berteriana, Pisum sativum, Phaseolus angularis, Phoenix dactylifera, Poa saltuensis subsp. languida, Populus canescens, Raphanus sativus, Silene latifolia, Sinapis arvensis, Typha latifolia, Vicia faba, Vigna radiata, Vitis vinifera</i> |

Agrisera

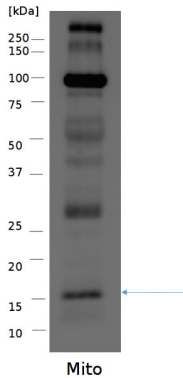
This product is **for research use only** (not for diagnostic or therapeutic use)

contact: support@agrisera.com

Agrisera AB | Box 57 | SE-91121 Vännäs | Sweden | +46 (0)935 33 000 | www.agrisera.com

Selected references | To be added when available, antibody released in February 2017.

Application example



30 μ g of mitochondrial fraction from *Arabidopsis thaliana* extracted with buffer (sucrose, tetrasodiumpyrophosphate, EDTA, KH₂O₄, PVP-40, BSA, pH 7.5) and denatured with 56 °C for 15 min at 650 rpm were separated on 12 % SDS-PAGE and blotted overnight (12V) to PVDF using wet transfer. Blots were blocked with 5% skimmed powder milk in TBS-T for 1h at room temperature (RT) with agitation. Blot was incubated in the purified anti S14 serum at a dilution of 1: 1 000 for 1,5h at RT with agitation. The antibody solution was decanted and the blot was rinsed briefly twice, then washed once for 15 min and 3 times for 5 min in TBS-T at RT with agitation. Blot was incubated in secondary antibody (anti-rabbit IgG horse radish peroxidase conjugated, from Agrisera, [AS09 602](#)) diluted to 1:25 000 in for 1h at RT with agitation. The blot was washed as above and developed for 2 min with WesternBright Quantum HRP substrate (Advansta). Exposure time was ~ 60 seconds.

Courtesy of Dr. Małgorzata Kwaśniak-Owczarek, University of Wrocław, Poland