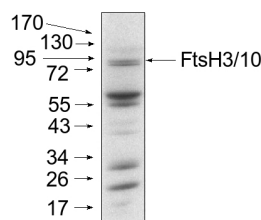


Product no **AS07 204****Anti-FtsH3 + FtsH10 | ATP-dependent zinc metalloprotease FtsH3 + FtsH10 (mitochondrial)****Product information**

<b>Immunogen</b>	KLH-conjugated peptide derived from sequences of <i>Arabidopsis thaliana</i> FtsH3 and FtsH10 with localization to mitochondria <u>Q84WU8</u> , <u>At2g29080</u> and <u>Q8VZL8</u> , <u>At1g07510</u>
<b>Host</b>	Rabbit
<b>Clonality</b>	Polyclonal
<b>Purity</b>	Immunogen affinity purified serum in PBS pH 7.4.
<b>Format</b>	Lyophilized
<b>Quantity</b>	200 µg
<b>Reconstitution</b>	For reconstitution add 100 µl of sterile water
<b>Storage</b>	Store lyophilized/reconstituted at -20°C; once reconstituted make aliquots to avoid repeated freeze-thaw cycles. Please remember to spin the tubes briefly prior to opening them to avoid any losses that might occur from material adhering to the cap or sides of the tube.

**Additional information** | Blue-native (2D BN/SDS-PAGE) methodology is described in [Piechota et al. 2010](#)**Application information**

<b>Recommended dilution</b>	1 : 500-1 : 1000 (WB)
<b>Expected   apparent MW</b>	80 kDa
<b>Confirmed reactivity</b>	<i>Arabidopsis thaliana</i>
<b>Predicted reactivity</b>	<i>Arabidopsis thaliana</i>
<b>Not reactive in</b>	No confirmed exceptions from predicted reactivity are currently known
<b>Selected references</b>	<a href="#">Kolodziejczak et al. (2018)</a> . m-AAA Complexes Are Not Crucial for the Survival of Arabidopsis Under Optimal Growth Conditions Despite Their Importance for Mitochondrial Translation. <i>Plant Cell Physiol.</i> 2018 May 1;59(5):1006-1016. doi: 10.1093/pcp/pcy041. <a href="#">Piechota et al. (2010)</a> . Identification and characterization of high-molecular-weight complexes formed by m-AAA proteases and prohibitins in mitochondria of Arabidopsis thaliana. <i>J Biol Chem.</i> 2010 Apr 23;285(17):12512-21. doi: 10.1074/jbc.M109.063644.

**Application example**

**Total protein** from *Arabidopsis thaliana* mitochondria (20 µg) were separated on 10% acrilamide gel and electrophoresis prepared according to Schägger and von Jagow (Anl. Biochem., 1987, 166:368-379). After running the gel, proteins were transferred to nitrocellulose membrane using wet transfer (0.22% CAPS, pH 11). Transfer was checked by Ponceau S staining. Blot was destained by several quick washings in distilled water and 1 washing in 1X TBS (10 mM Tris pH 7.5, 150 mM NaCl) (10-15 min.). Blot was blocked by 1.5 hour in 5% milk in TBST (1X TBS, 0.1% 20). After blocking blot was washed quickly twice in TBST and incubated 2 hours with primary antibody (dilution 1: 1000 TBST (dilution 1:1000). Washing: two quick washings in TBST and 3 x 10 min. washings in TBST. Then blot was incubated 45-60 min. with a secondary anti-rabbit antibodies conjugated to peroxidase (dilution 1:10000) in TBST. Washing: as above. After washing blot was incubated 1-2 min. in ECL solution and exposed to Kodak autoradiography film. Exposure time was 15-60 seconds.

Mitochondria were isolated as described by Urantowka et al. (Plant Mol Biol, 2005, 59:239-52). Mitochondrial pellets were suspended in 1X Laemmli buffer (5% beta-mercaptoethanol, 3.7% glycerol, 1.1% SDS, 23 mM Tris-HCl pH 6.8, 0.01% bromophenol blue), heated (95°C, 5 min.) and centrifuged (13 000rpm, 1 min.).



This product is **for research use only** (not for diagnostic or therapeutic use)

**contact: [support@agrisera.com](mailto:support@agrisera.com)**

Agrisera AB | Box 57 | SE-91121 Vännäs | Sweden | +46 (0)935 33 000 | [www.agrisera.com](http://www.agrisera.com)

Courtesy Dr. J. Piechota, Wrocław University, Poland