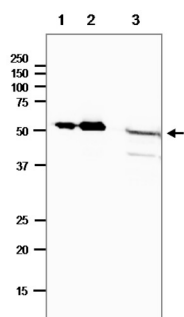


Product no **AS21 4548****Anti-DNA Photolyase (E,coli)****Product information**

| | |
|------------------|--|
| Immunogen | Purified, full-length, recombinant DNA photolyase protein from <i>E.coli</i> , UniProt: P00914 |
| Host | Rabbit |
| Clonality | Polyclonal |
| Purity | Total IgG. Protein A purified in PBS with 50% glycerol, filter sterilized. |
| Format | Liquid |
| Quantity | 200 µg |
| Storage | Store at -20°C; make aliquots to avoid repeated freeze-thaw cycles. Please remember to spin the tubes briefly prior to opening them to avoid any losses that might occur from material adhering to the cap or sides of the tube. |

Application information

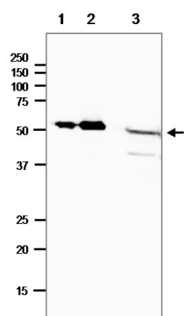
| | |
|-------------------------------|---|
| Recommended dilution | Assay-dependent (ELISA), 1: 200 (IP), 1 : 1000 (WB) |
| Expected apparent MW | 53.6 kDa |
| Confirmed reactivity | <i>Escherichia coli</i> |
| Predicted reactivity | Species of your interest not listed? Contact us |



Samples: Purified *E.coli* photolyase 8.4 ng (1), Purified *E.coli* photolyase 42 ng (2), *E. coli* crude lysate, 40 µg (3) were separated on 12.5 % SDS-PAGE and transferred to a PVDF membrane at 15V, overnight, followed by blocking with 5 % non-fat milk, washes and incubation with a primary antibodies at 1: 1000 dilution 1h/RT in TBS-T, washes and incubation with secondary antibodies HRP conjugated. Reaction was visualized by chemiluminescence following manufacture's recommendations.

Important note:

there are only 10-20 molecules of photolyase per *E.coli* cell, therefore high protein load/well is necessary.



Immunoprecipitation was performed by using Dynabeads Magnetic system (Thermo Fisher).

Samples: *E. coli* AB1157 cell lysate (300µg) , primary antibody 2µg (1), *E. coli* AB1157 cell lysate (300µg), antibody 10 µg (2), Positive control: *E. coli* Photolyase purified, 4.2 µg, antibody 10 µg (3), Negative control: No sample, antibody 10 µg (4). Western blot: Anti-Photolyase antibody used

Agrisera

Part of Thermo Fisher Scientific

This product is **for research use only** (not for diagnostic or therapeutic use)

contact: support@agrisera.com

Agrisera AB | Box 57 | SE-91121 Vännäs | Sweden | +46 (0)935 33 000 | www.agrisera.com

at 1 : 1000 dilution and as the second antibody, HRP-conjugated goat anti-rabbit IgG for IP (suitable for detection of immunoprecipitation products) was used at 1: 1000 dilution 1 h/RT. Reaction was visualized by chemiluminescence, following manufacture's recommendations.