

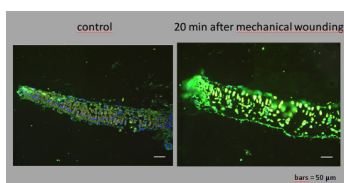
Product no **AS11 1799**
Anti-JA | Jasmonic acid

Product information

Immunogen	BSA-conjugated jasmonic acid (JA)
Host	Rabbit
Clonality	Polyclonal
Purity	Total IgG. Protein G purified in PBS pH 7.4.
Format	Lyophilized
Quantity	0.5 mg
Reconstitution	For reconstitution add 50 µl of sterile water
Storage	Store lyophilized/reconstituted at -20°C; once reconstituted make aliquots to avoid repeated freeze-thaw cycles. Please remember to spin the tubes briefly prior to opening them to avoid any losses that might occur from material adhering to the cap or sides of the tube.
Additional information	This product can be sold containing ProClin if requested

Application information

Recommended dilution	1 : 1000 (IL)
Confirmed reactivity	<i>Populus trichocarpa</i> , <i>Solanum lycopersicum</i>
Predicted reactivity	Higher Plants Species of your interest not listed? Contact us
Not reactive in	No confirmed exceptions from predicted reactivity are currently known
Selected references	Wojciechowska et al. (2026) . Functional insights into a putative 2-OG oxygenase involved in jasmonic acid metabolism and xylem development in <i>Populus trichocarpa</i> . <i>Plant Cell Physiol.</i> 2026 Mar 16;pcag035. doi: 10.1093/pcp/pcag035. Nomura et al. (2025) . Spatiotemporal localization of jasmonate in the regulation of fruit set in tomato. <i>J Exp Bot.</i> 2025 Aug 1;erf349. doi: 10.1093/jxb/erf349. Akhivarova et al. (2024) . The Long-Distance Transport of Some Plant Hormones and Possible Involvement of Lipid-Binding and Transfer Proteins in Hormonal Transport. <i>Cells.</i> 2024 Feb 20;13(5):364. doi: 10.3390/cells13050364. Wojciechowska et al. (2020) . Abscisic Acid and Jasmonate Metabolisms Are Jointly Regulated During Senescence in Roots and Leaves of <i>Populus trichocarpa</i> . <i>Int J Mol Sci.</i> 21 (6)



Material:

fully developed leaves of tomato plants (*Solanum lycopersicum* cv. MicroTom) wounded by squeezing with tweezers. The secondary antibody: goat anti-rabbit IgG coupled to AlexaFluor488 (catalog # A-11008, Invitrogen).

Immunolocalization was done according to [Hause et al. \(2013\)](#).