

Product no **AS18 4224**

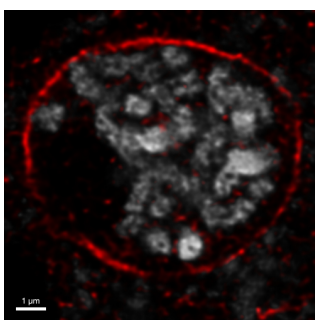
## SUN1,2 | SUN domain-containing protein 1,2

### Product information

<b>Immunogen</b>	KLH-conjugated peptide derived from N-terminus of SUN1 of <i>Arabidopsis thaliana</i> UniProt: <a href="#">Q9FF75</a> , TAIR: <a href="#">AT5G04990</a> and SUN2, UniProt: <a href="#">Q9SG79</a> , TAIR: <a href="#">AT3G10730</a>
<b>Host</b>	Rabbit
<b>Clonality</b>	Polyclonal
<b>Purity</b>	Immunogen affinity purified serum in PBS pH 7.4.
<b>Format</b>	Lyophilized
<b>Quantity</b>	50 µg
<b>Reconstitution</b>	For reconstitution add 50 µl, of sterile water
<b>Storage</b>	Lyophilized antibody can be stored at -20°C for up to 3 years. Re-constituted antibody can be stored at 4°C for several days to weeks. Once reconstituted make aliquots to avoid repeated freeze-thaw cycles. Please remember to spin the tubes briefly prior to opening them to avoid any losses that might occur from material adhering to the cap or sides of the tube.

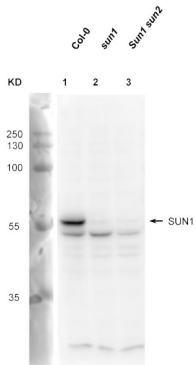
### Application information

<b>Recommended dilution</b>	1 : 1000 (WB)
<b>Expected   apparent MW</b>	51   56 kDa
<b>Confirmed reactivity</b>	<i>Arabidopsis thaliana</i>
<b>Predicted reactivity</b>	<i>Arabis nemor</i> , <i>Eutrema salsugineum</i> , <i>Microthlaspi erraticum</i> , <i>Noccaea caerulescens</i> Species of your interest not listed? <a href="#">Contact us</a>
<b>Not reactive in</b>	<i>Pisum sativum</i>
<b>Selected references</b>	To be added when available, antibody released in April 2021.



Immunofluorescent localization of SUN1,2 (red) on a male meiocyte from *Arabidopsis thaliana*. DAPI - grey. Detailed method can be found in [Hurel et al. 2018](#).

Courtesy of Dr. Mathilde Creton, INRAE, France

**Samples:**

- 1 - 15 ug of *Arabidopsis thaliana* Col-0 callus total protein
  - 2 - 15 ug of *Arabidopsis thaliana* sun1 mutant callus total protein
  - 3 - 15 ug of *Arabidopsis thaliana* sun1 sun2 mutant callus total protein
- MW markers: PageRuler™ Plus Prestained Protein Ladder, 10 to 250 kDa (ThermoFisherScientific)

15 µg/well of total protein extracted freshly from *Arabidopsis thaliana* callus with 50 mM Tris pH7.5, 150 mM NaCl, 1 mM EGTA, 1 mM DTT, 1% TritonX-100, 0.5% sodium deoxycholate, 0.1% SDS, 1xprotease inhibitor cocktail (ThermoFisherScientific) and denatured with Bio-Rad 1x Laemmli sample buffer (BioRad) at 95°C 5 min. Samples were separated on 12% SDS-PAGE and blotted 15V, 16h to PVDF (pore size of 45 µm), using wet transfer. Blot was blocked with 5% BSA for 1h/RT agitation. Blot was incubated in the primary antibody in 2% BSA in TBS-T at a dilution of 1:1 000 for 1h/RT with agitation in 2% BSA with TBS-T. The antibody solution was decanted and the blot was rinsed briefly twice, then washed once for 15 min and 3 times for 5 min in TBS-T at RT with agitation. Blot was incubated in Agrisera matching secondary antibody (anti-rabbit IgG horse radish peroxidase conjugated [AS09 602](#)) diluted to 1:25 000 in TBS-T for 1h/RT with agitation. The blot was washed as above and developed for 2 min with [Agrisera ECLBright](#). Exposure time was 10 seconds.

Courtesy of Wei Wang, Umeå Plant Science Centre, Sweden