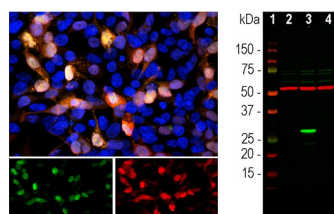


Product no **AS21 4583****Anti-EGFP | Enhanced Green Fluorescence Protein****Product information**

<b>Immunogen</b>	Recombinant GFP from <i>Aequorea coerulea</i> (belt jellyfish) overexpressed and purified from <i>E. coli</i> , UniProt: <a href="#">Q6YGZ0</a>
<b>Host</b>	Rabbit
<b>Clonality</b>	Polyclonal
<b>Purity</b>	Immunogen affinity purified in PBS pH 7.2-7.6, 0.1% trehalose, 5 mM sodium azide.
<b>Format</b>	Lyophilized
<b>Quantity</b>	100 µg
<b>Reconstitution</b>	For reconstitution add 100 µl of sterile water, ultrapure water
<b>Storage</b>	Store lyophilized antibody at 4 °C. After reconstitution keep aliquots at -20°C for a higher stability. Avoid repetitive freeze/thaw cycles. Centrifuge briefly to remove any insoluble material. Expiry date: 12 months after purchase if unopened

**Application information**

<b>Recommended dilution</b>	1:2000 - 1:5000 (ICC), 1:1000 - 1:5000 (WB)
<b>Expected   apparent MW</b>	27 kDa (for GFP without fusion partner)
<b>Confirmed reactivity</b>	GFP, EGFP
<b>Not reactive in</b>	mCherry
<b>Additional information</b>	EGFP has Excitation max (nm): 488; Emission max (nm): 509; Extinction coefficient (Cm-1M-1): 61000
<b>Selected references</b>	To be added when available.



Left panel: Analysis of GFP expression (green) in transfected HEK293 cells by immunocytochemistry. Cells were stained with rabbit anti-GFP antibody (red, 1:2,000). Blue: Hoechst staining for nuclei. Transfected cells appear orange-yellow due to the green (GFP) and red (anti-GFP antibody) color overlay.

Right panel: Western blot analysis of GFP protein in transfected HEK293 lysate using rabbit antibody to GFP (green, 1:2,000). [1] protein standard, [2] non-transfected control cells, [3] transfected cells with GFP construct, [4] transfected cells with mCherry construct. A strong band at ~27 kDa corresponds to the expected molecular weight of GFP protein detected only in cells transfected with GFP construct. The antibody does not cross-react with mCherry protein. The same blot was simultaneously probed with a mouse antibody to beta-tubulin (red, ~ 50 kDa, lanes 2-4).