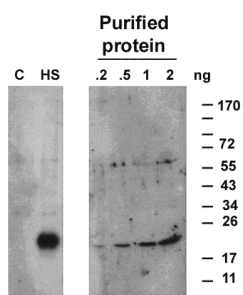


Product no **AS08 284****Anti-HSP17,6 | Cytosolic class I heat shock protein 17,6 (chicken antibody)****Product information**

Immunogen	Recombinant protein derived from a sequence <i>Arabidopsis thaliana</i> HSP17.6 Ci (class one) UniProt: P13853 , TAIR: At1g53540
Host	Chicken
Clonality	Polyclonal
Purity	Purified total IgY (chicken egg yolk immunoglobulin) in PBS pH 8. Contains 0.02 % sodium azide.
Format	Liquid
Quantity	200 µl
Storage	Store at 4°C; make aliquots to avoid working with a stock. Please remember to spin the tubes briefly prior to opening them to avoid any losses that might occur from material adhering to the cap or sides of the tube.
Additional information	Total IgY concentration is 32.2 µg/µl

Application information

Recommended dilution	1 : 1000 (WB)
Expected apparent MW	17.6 kDa
Confirmed reactivity	<i>Arabidopsis thaliana</i>
Not reactive in	No confirmed exceptions from predicted reactivity are currently known
Additional information	There are six total class I genes, Essentially this antibody might react to some extent with all of them, But does not react with class II, organelle, or any other shsp classes
Selected references	Mao and Sun (2015). <i>Arabidopsis</i> seed-specific vacuolar aquaporins are involved in maintaining seed longevity under the control of ABSCISIC ACID INSENSITIVE 3. <i>J Exp Bot.</i> 2015 May 26. pii: erv244.

Application example

10 µg of total protein from (C) *Arabidopsis thaliana* WT, non-stressed, (HS) *Arabidopsis thaliana* WT stressed at 38°C were separated on **15% SDS-PAGE** and blotted 1h to **nitrocellulose** (Biorad). Blots were incubated in the primary antibody at a dilution of 1: 1 000 for 1h at room temperature with agitation and a secondary HRP-conjugated antibody (1: 10 000).