

Antibodies for Environmental Stress

Agrisera offers a large collection of validated, high-quality antibodies for proteins involved in plant stress response. These antibodies are reactive in thousands of plant species and cited in thousands of publications.

Cold stress



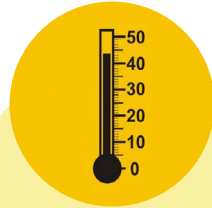
COR14b | CPT6
Enolase | GORK
LEA4-5 | LEA6-3
PGL35 | S6K1-2
siI0528 | V-ATPase
And many more...

Drought stress



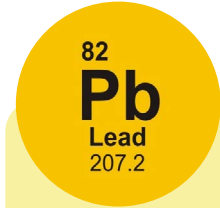
AHB2 | APase
ATG8 | BiP | Cat
Dehydrin | EIN2
GLDH | GLN1/GLN2
GORK | HD-ZIP
And many more...

Heat shock



ABI2 | AHB2
ATPase | CDJ1
CGE1 | ClpB-P
DnaJ | DnaK
DnaK2 | EIN2 | HSF1
And many more...

Heavy metal stress



ALD | APX | CCS
CSD2 | FeSOD
GPX | GR | GSNO
IRT1 | LOX | MnSOD
MT1a | MT2a | NtrC
And many more...

Hypoxia



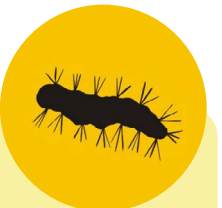
ADH | ADH/ALDH
PDC | Sub1A
Sub1C | SUS1

Oxidative stress



3-nitroY | ACO1
AHB2 | AO | AOX1
AOX1/2 | APX | ATG4
CAPX | CCS
Cu/ZnSOD | DHAR1
And many more...

Pathogen attack



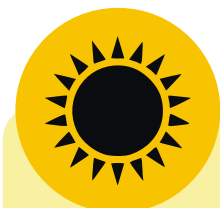
AGO2 | ATG4 | ATG8
COI1 | CPK-EF
EDS1 | EIN2 | FLS2
GOX | Hellebrin
HRP | NRB1 | PAD4
And many more...

Salt stress



ACO1 | ALD | APase
BiP | EIN2 | GAI
GORK | H+ATPase
NCED3 | NHE-1
PIP2-1-7 | PIP2-7
And many more...

UV radiation



Phly | UVR3
UVR8

Wounding



AHB2 | COI1
GSNOR | HRP
NRT1.4 | PPO

Application example

Product #: AS09 481

WB using Agrisera BiP antibody on 5 µg of total protein from *A.thaliana* (1), *H. vulgare* (2), *P. sativum* (3), *Z. mays* (4), *C. sativus* (5), *S. tuberosum* (6), *S. oleracea* (7), *S. lycopersicum* (8) *P. patens* (9)*, *C. reinhardtii* (10). BiP is detected at 80 kDa.

