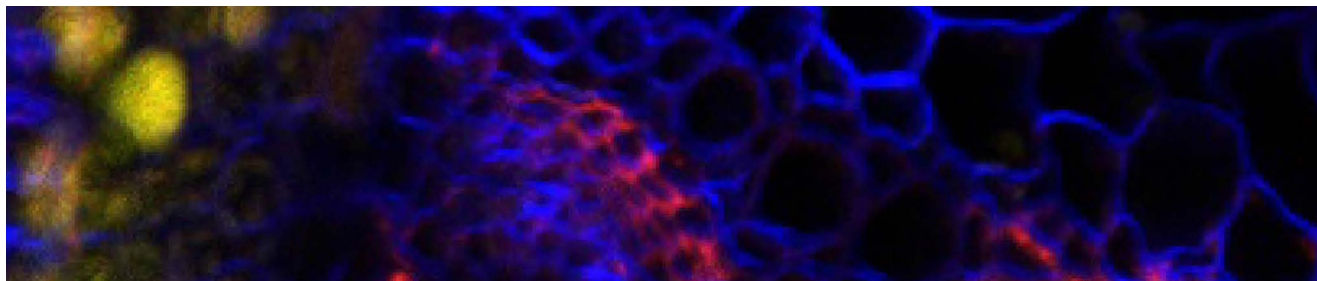


Cell wall antibodies

This antibody collection contains various antibodies that will allow immunolocalization of components of plant cell walls and enzymes responsible for cell wall biosynthesis.



Agrisera collection

Product name	Product number
CesA4 (IRX5) Cellulose synthase A catalytic subunit 4 [UDP-forming]	AS12 2582
CesA7 (IRX3) Cellulose synthase A catalytic subunit 7 [UDP-forming]	AS12 2581
CesA8 (IRX1) Cellulose synthase A catalytic subunit 8 [UDP-forming]	AS12 2580
Hardwood lignin (birch)	AS16 3975
RHD3 Protein Root Hair Defective 3 (N-terminal)	AS20 4417
Softwood lignin (spruce)	AS16 3974
XTH-Xet XET5 Xyloglucan xyloglucosyl transferase	AS08 319

Dr. Knox collection, University of Leeds

These monoclonal antibodies were developed by the laboratory of Prof. Paul Knox, University of Leeds, United Kingdom.

Product name	Product number
Arabinogalactan-protein, AGP (monoclonal, clone LM2)	AS18 4211-1ml
Extensin glycoprotein (monoclonal, clone LM1)	AS18 4210-1ml
Ferulated polysaccharides (monoclonal, clone LM12)	AS18 4212-1ml
Glucuronoxylan (monoclonal, clone LM28)	AS18 4208-1ml
Heteromannan (monoclonal, clone LM21)	AS18 4209-1ml
Heteroxylan (monoclonal, clone LM10)	AS18 4206-1ml
Heteroxylan (monoclonal, clone LM11)	AS18 4207-1ml
Pectic polysaccharide, alpha-1,5-arabinan (monoclonal, clone LM13)	AS18 4200-1ml
Pectic polysaccharide, alpha-1,5-arabinan (monoclonal, clone LM6)	AS18 4198-1ml
Pectic polysaccharide, alpha-1,5-arabinan (monoclonal, clone LM6-M)\$\$	AS18 4199-1ml
Pectic polysaccharide, beta-1,4-galactan (monoclonal, clone LM5)	AS18 4197-1ml
Pectic polysaccharide, homogalacturonan (monoclonal, clone JIM7)	AS18 4195-1ml
Pectic polysaccharide, homogalacturonan (monoclonal, clone LM18)	AS18 4192-1ml
Pectic polysaccharide, homogalacturonan (monoclonal, clone LM19)	AS18 4191-1ml
Pectic polysaccharide, homogalacturonan (monoclonal, clone LM7)	AS18 4196-1ml
Pectic polysaccharide, Rhamnogalacturonan (monoclonal, clone LM16)	AS18 4201-1ml
Pectic polysaccharide, Xylogalacturonan (monoclonal, clone LM8)	AS18 4202-1ml
Xyloglucan (monoclonal, clone LM15)	AS18 4203-1ml
Xyloglucan (monoclonal, clone LM24)	AS18 4204-1ml
Xyloglucan (monoclonal, clone LM25)	AS18 4205-1ml
Cell wall set 3 antibodies	AS20 4518
Cell wall set 5 antibodies	AS20 4516

Dr. Hahn collection, University of Georgia

These monoclonal antibodies were developed under the sponsorship of the US National Science Foundation, through award number DBI-0421683. Their use in biomass characterization, study of biomass deconstruction and quantitation was developed under the sponsorship of the US Department of Energy through awards DE-PS02-06ER64304 and DE-AC05-00OR22725 (BioEnergy Science Center).

Product name.....	Product number
Acetylated glucomannan (clone CCRC-M170).....	AS16 3226-1m1
Acetylated Mannan (clone CCRC-M169).....	AS20 4493-1m1
Arabinogalactan-2 (clone CCRC-M133).....	AS16 3115-1m1
Arabinogalactan-3 (clone CCRC-M85).....	AS16 3133-1m1
Arabinogalactan-4 (clone CCRC-M78).....	AS16 3231-1m1
Fucosylated xyloglucan (clone CCRC-M1).....	AS16 3136-1m1
Galactomannan-1 (clone CCRC-M70).....	AS16 3116-1m1
Galactomannan-2 (clone CCRC-M166).....	AS20 4494-1m1
Galactomannan-2 (clone CCRC-M168).....	AS20 4495-1m1
Galactomannan-2 (clone CCRC-M174).....	AS16 3232-1m1
Homogalacturonan-1 (clone CCRC-M38).....	AS16 3117-1m1
Non-fucosylated xyloglucan- (clone CCRC-M58).....	AS16 3235-1m1
Non-fucosylated xyloglucan-1 (clone CCRC-M101).....	AS16 3230-1m1
Non-fucosylated xyloglucan-2 (clone CCRC-M88).....	AS16 3233-1m1
Non-fucosylated xyloglucan-3 (clone CCRC-M100).....	AS16 3234-1m1
Non-fucosylated xyloglucan-5 (clone CCRC-M48).....	AS16 3221-1m1
Rhamnogalacturonan-I / Arabinogalactan (clone CCRC-M7).....	AS16 3225-1m1
Rhamnogalacturonan-Ia (clone CCRC-M2).....	AS16 3134-1m1
Rhamnogalacturonan-Ib (clone CCRC-M61).....	AS16 3237-1m1
Rhamnogalacturonan-Ic (clone CCRC-M23).....	AS16 3236-1m1
Xylan-1 / Xyloglucan (clone CCRC-M108).....	AS16 3135-1m1
Xylan-3 (clone CCRC-M114).....	AS16 3227-1m1
Xylan-4 (clone CCRC-M154).....	AS16 3238-1m1
Xylan-5 (clone CCRC-M144).....	AS16 3239-1m1
Xylan-6 (clone CCRC-M138).....	AS16 3229-1m1
Xylan-7 (clone CCRC-M149).....	AS16 3228-1m1
Xyloglucan (clone CCRC-M96).....	AS20 4492-1m1

Application example

Product #: AS18 4191-1m1

Immunofluorescence method described in:
An extended set of monoclonal antibodies to pectic homogalacturonan. Yves Verhertbruggen, Susan E. Marcus, Ash Haeger, José J. Ordaz-Ortiz, J. Paul Knox, Carbohydrate research 344 (2009) 1858-1862.

