

# Antibodies for Environmental Stress

Agrisera offers a large collection of validated, high-quality antibodies for proteins involved in plant stress response. These antibodies are reactive in thousands of plant species and cited in thousands of publications.

## Cold stress



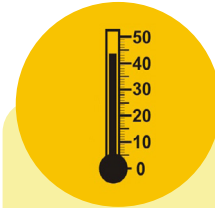
COR14b | CPT6  
Enolase | GORK  
LEA4-5 | LEA6-3  
PGL35 | S6K1-2  
sll0528 | V-ATPase  
And many more...

## Drought stress



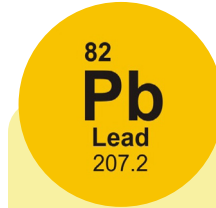
AHB2 | APase  
ATG8 | BiP | Cat  
Dehydrin | EIN2  
GLDH | GLN1/GLN2  
GORK | HD-ZIP  
And many more...

## Heat shock



ABI2 | AHB2  
ATPase | CDJ1  
CGE1 | ClpB-P  
DnaJ | DnaK  
DnaK2 | EIN2 | HSF1  
And many more...

## Heavy metal stress



ALD | APX | CCS  
CSD2 | FeSOD  
GPX | GR | GSNO  
IRT1 | LOX | MnSOD  
MT1a | MT2a | NtrC  
And many more...

## Hypoxia



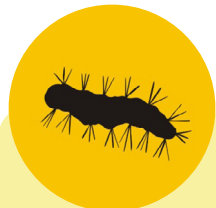
ADH | ADH/ALDH  
PDC | Sub1A  
Sub1C | SUS1

## Oxidative stress



3-nitroY | ACO1  
AHB2 | AO | AOX1  
AOX1/2 | APX | ATG4  
CAPX | CCS  
Cu/ZnSOD | DHAR1  
And many more...

## Pathogen attack



AGO2 | ATG4 | ATG8  
COI1 | CPK-EF  
EDS1 | EIN2 | FLS2  
GOX | Hellebrin  
HRP | NRB1 | PAD4  
And many more...

## Salt stress



ACO1 | ALD | APase  
BiP | EIN2 | GAI  
GORK | H+ATPase  
NCED3 | NHE-1  
PIP2-1-7 | PIP2-7  
And many more...

## Wounding



AHB2 | COI1  
GSNOR | HRP  
NRT1.4 | PPO

## Application example

Product #: AS09 481

WB using Agrisera BiP antibody on 5 µg of total protein from *A.thaliana* (1), *H. vulgare* (2), *P. sativum* (3), *Z. mays* (4), *C. sativus* (5), *S. tuberosum* (6), *S. oleracea* (7), *S. lycopersicum* (8) *P. patens* (9)\*, *C. reinhardtii* (10). BiP is detected at 80 kDa.

