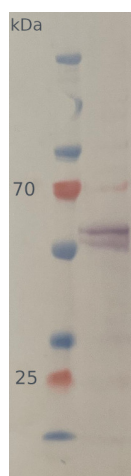


Product no **AS23 4916****UGPase | UDP-glucose pyrophosphorylase (cytoplasm marker, dicots)****Product information**

<b>Immunogen</b>	KLH-conjugated peptide derived from <i>Arabidopsis thaliana</i> UGP1, UniProt: <a href="#">A0A1I9LT02</a> and UGP2, UniProt: <a href="#">Q9M9P3</a> TAIR: <a href="#">AT3G03250</a> , <a href="#">AT5G17310</a>
<b>Host</b>	Rabbit
<b>Clonality</b>	Polyclonal
<b>Purity</b>	Antigen affinity purified serum, in PBS pH 7.4
<b>Format</b>	Lyophilized
<b>Quantity</b>	50 µg
<b>Reconstitution</b>	For reconstitution add 50 µl, of sterile or deionized water.
<b>Storage</b>	Store lyophilized/reconstituted at -20°C; once reconstituted make aliquots to avoid repeated freeze-thaw cycles. Please, remember to spin tubes briefly prior to opening them to avoid any losses that might occur from lyophilized material adhering to the cap or sides of the tubes.

**Application information**

<b>Recommended dilution</b>	1 : 1000 - 1 : 5000 (WB)
<b>Expected   apparent MW</b>	51,7   52,3 kDa
<b>Confirmed reactivity</b>	<i>Arabidopsis thaliana</i> , <i>Hordeum vulgare</i> , <i>Zea mays</i>
<b>Predicted reactivity</b>	<i>Arachis hypogaea</i> , <i>Brachypodium distachyon</i> , <i>Brassica napus</i> , <i>Cannabis sativa</i> , <i>Capsicum annuum</i> , <i>Glycine max</i> , <i>Gossypium</i> sp., <i>Malus domestica</i> , <i>Manihot esculenta</i> , <i>Medicago truncatula</i> , <i>Nicotiana tabacum</i> , <i>Pisum sativum</i> , <i>Populus</i> sp. , <i>Ricinus communis</i> , <i>Saccharum</i> sp. , <i>Solanum lycopersicum</i> , <i>Solanum tuberosum</i> , <i>Sorghum bicolor</i> , <i>Theobroma cacao</i> Species of your interest not listed? <a href="#">Contact us</a>
	For monocotyl species, use <a href="#">AS14 2813</a>
<b>Not reactive in</b>	<i>Marchantia polymorpha</i>
<b>Selected references</b>	To be added when available, antibody available in March 2024.



10 µg/well of total protein extracted from *Arabidopsis thaliana* leaf, using PEB extraction buffer (Agrisera [AS08 300](#)) and denatured with Invitrogen LDS sample buffer (4X) at 70°C/5 min. Samples were separated on Invitrogen NuPage Bis-Tris 4-12% SDS-PAGE and blotted for 1 h to Invitrogen PVDF (pore size of 0.45 µm), using: wet transfer. Blot was blocked with 5% milk in TBS-T for: 1h/RT with agitation. Blot was incubated in the primary antibody at a dilution of 1: 1 000 for 1h/RT with TBS-T Blocking. The antibody solution was decanted, and the blot was rinsed briefly twice, then washed once for 15 min and 3 times for 5 min in TBS-T at RT with agitation. Blot was incubated in matching secondary antibody (anti-rabbit IgG ALP conjugated, [AS09 607](#) lot 2302 ) diluted to 1: 5 000 in TBS-T Blocking for 0,5h/RT with agitation. The blot was washed as above and developed with [AS19 BCIP-NBT-PLUS](#) lot 08225181 for 1 min. As soon as the desired band is detectable, briefly wash the membrane in generous amounts of deionized water. Transfer the membrane to fresh deionized water and incubate for 2 minutes with agitation before placing the membrane on Whatman paper to dry.



This product is **for research use only** (not for diagnostic or therapeutic use)

**contact: [support@agrisera.com](mailto:support@agrisera.com)**

---

Agrisera AB | Box 57 | SE-91121 Vännäs | Sweden | +46 (0)935 33 000 | [www.agrisera.com](http://www.agrisera.com)

Courtesy Agrisera