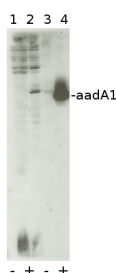


Product no **AS09 580****Anti-aadA1 | Aminoglycoside adenylyltransferase (chloroplast transformation marker)****Product information**

Immunogen	KLH-conjugated peptide derived from known aadA1 protein sequences
Host	Rabbit
Clonality	Polyclonal
Purity	Immunogen affinity purified serum in PBS pH 7.4.
Format	Lyophilized
Quantity	50 µg
Reconstitution	For reconstitution add 50 µl of sterile water
Storage	Store lyophilized/reconstituted at -20°C; once reconstituted make aliquots to avoid repeated freeze-thaw cycles. Please remember to spin the tubes briefly prior to opening them to avoid any losses that might occur from material adhering to the cap or sides of the tube.
Additional information	This product can be sold containing ProClin if requested

Application information

Recommended dilution	1 : 3 000 (WB)
Expected apparent MW	30 30 kDa
Confirmed reactivity	aadA cassette in <i>Nicotiana tabacum</i> , <i>Chlamydomonas reinhardtii</i>
Predicted reactivity	<i>Acinetobacter baumannii</i> , <i>Enterobacter agglomerans</i> , <i>Klebsiella pneumoniae</i> , <i>Klebsiella oxytoca</i> , <i>Kluyvera ascorbata</i> , <i>Pseudomonas aeruginosa</i> , <i>Salmonella enterica</i> subsp. <i>enterica</i> serovar <i>Worthington</i> , <i>Staphylococcus aureus</i> , <i>Serratia</i> sp., <i>Shigella flexneri</i>
	Species of your interest not listed? Contact us
Not reactive in	No confirmed exceptions from predicted reactivity are currently known
Selected references	Lauersen et al. (2018). Phototrophic production of heterologous diterpenoids and a hydroxy-functionalized derivative from <i>Chlamydomonas reinhardtii</i> . <i>Metab Eng.</i> 2018 Jul 12;49:116-127. doi: 10.1016/j.ymben.2018.07.005.

Application example

Chlamydomonas reinhardtii cells (**1,2**) (corresponding to 10 µg of chlorophyll) and soluble extracts of *Nicotiana tabacum* leaves (**3,4**) were separated on a 15% acrylamide gel containing 8M urea, transferred on nitrocellulose membrane, incubated with anti-aadA1 antibodies in 1: 5000 dilution for 1 h in RT, followed by washes and incubation with a secondary anti-rabbit IgG antibody in 1: 10 000 dilution) and revealed by chemiluminescent detection reagent (3 min exposure). Tested *Chlamydomonas reinhardtii* and *Nicotiana tabacum* strains expressed (+) or not (-) the aadA cassette.

AadA protein in *Chlamydomonas reinhardtii* migrates more slowly than its *Nicotiana tabacum* counterpart as it also includes the 27 first residues of the atpA coding sequence.

Courtesy of Drs Y.Choquet, K. Wostrickoff and D. Drapier, CNRS, France