

Product no **AS15 3018****Anti-Acetylated Lysine (polyclonal)****Product information**

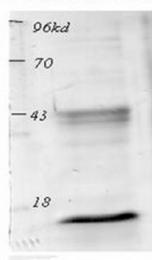
- Immunogen** | chemically modified KLH allowing acetylation of all lysines of this carrier protein
- Host** | Rabbit
- Clonality** | Polyclonal
- Purity** | Total immunoglobulin. Protein A purified in PBS, 50% glycerol, 0.09% sodium azide.
- Format** | Liquid
- Quantity** | 100 µg (1 mg/ml)
- Storage** | Store at -20 °C for 1 year; make aliquots to avoid repeated freeze-thaw cycles.

Additional information | Protein A purified antibodies are present in PBS with 0,09 % sodium azide as preservative and 50 % glycerol,

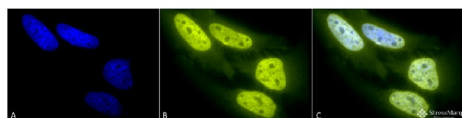
Application information

Recommended dilution | 1 : 100 (ICC/IF), 1 : 250 (WB)

Confirmed reactivity | Detects proteins containing acetylated lysine residues in all species, No reaction to non-acetylated proteins



>Western blot analysis of mouse spleen lysates showing detection of acetylated lysine protein using rabbit anti-acetylated lysine polyclonal antibody used at a dilution of 1:1000.



Immunocytochemistry/Immunofluorescence analysis using rabbit anti-acetylated lysine polyclonal antibody.

Tissue: heat shocked cervical cancer cell line (HeLa).

Species: human.

Fixation: 2% formaldehyde for 20 min at RT.

Primary antibody: rabbit anti-acetylated lysine polyclonal antibody at a dilution 1:100 for 12 hours at 4 °C.

Secondary antibody: R-PE goat anti-rabbit (yellow) at 1:200 for 2 hours at RT. Counterstain: DAPI (blue) nuclear stain at 1:40 000 for 2 hours at RT. Localization: Nucleus. Cytoplasm.

Magnification: 100x.

Figures: (A) DAPI (blue) nuclear stain. (B) Anti-acetylated lysine antibody. (C) Composite. heat shocked at 42 °C for 1h.