

Product no **AS10 748****Anti-ADH/ALDH | Alcohol/acetaldehyde dehydrogenase (bacterial/algal)****Product information**

Immunogen | KLH-conjugated peptide derived from available algal and bacterial ADH sequences including *Chlamydomonas reinhardtii*

Host | Rabbit

Clonality | Polyclonal

Purity | Serum

Format | Lyophilized

Quantity | 200 µl

Reconstitution | For reconstitution add 200 µl of sterile water

Storage | Store lyophilized/reconstituted at -20°C; once reconstituted make aliquots to avoid repeated freeze-thaw cycles. Please remember to spin the tubes briefly prior to opening them to avoid any losses that might occur from material adhering to the cap or sides of the tube.

Additional information | Selected peptide is well conserved in Escherichia coli ADHE (P0A9Q7), most of the microbial dual function aldehyde/alcohol dehydrogenases (ADHE) and Iron-containing alcohol dehydrogenases are also conserved in a peptide used to elicit ADH antibody

Application information

Recommended dilution | 1 : 1000 (WB)

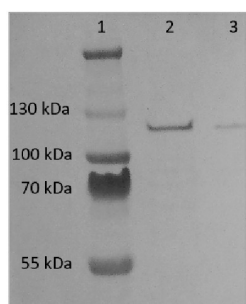
Expected | apparent MW | 100 | 100 kDa (*C.reinhardtii*), 96 kDa (*E.coli*)

Confirmed reactivity | *Chlamydomonas reinhardtii*, *E.coli*, *Streptococcus pneumoniae*

Predicted reactivity | Algae, *Nannochloropsis gaditana*, *Picochlorum sp.*
Species of your interest not listed? [Contact us](#)

Not reactive in | No confirmed exceptions from predicted reactivity are currently known

Selected references | [Kurylo et al. \(2018\)](#). Endogenous rRNA Sequence Variation Can Regulate Stress Response Gene Expression and Phenotype. Cell Rep. 2018 Oct 2;25(1):236-248.e6. doi: 10.1016/j.celrep.2018.08.093.
[Laurenceau et al. \(2015\)](#). Conserved Streptococcus pneumoniae Spirosomes Suggest a Single Type of Transformation Pilus in Competence. PLoS Pathog. 2015 Apr 15;11(4):e1004835. doi: 10.1371/journal.ppat.1004835.
[Kukuczka et al. \(2014\)](#). Proton Gradient Regulation5-Like1-Mediated Cyclic Electron Flow Is Crucial for Acclimation to Anoxia and Complementary to Nonphotochemical Quenching in Stress Adaptation. Plant Physiol. 2014 Jun 19;165(4):1604-1617.

**Samples:**

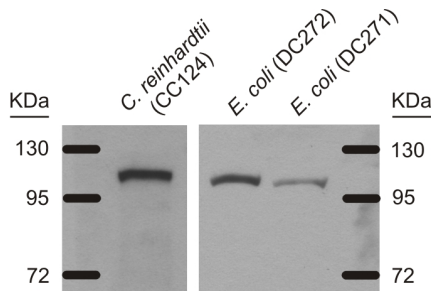
1 - Molecular marker

2 - Whole cell lysate, *E.Coli* (BL21) 10µl from OD=0,5

3 - Whole cell lysate, *E.Coli* (BL21) 3µl from OD=0,5

10 or 3 µg/well of total protein extracted from frozen *E. coli* pellet from 1 ml *E.coli* (BL21) pellet OD=0,5. Resuspended in 750µl PBS and vortexed briefly. Denatured by heating at 95 °C for 5 min. Samples were separated by NuPAGE 4-12% Bis-Tris Gel (NuPage MES SDS Running Buffer)

(20X) and blotted for 40 min to PVDF (pore size of 0,2 um), using: wet, transfer in RT. Blot was blocked with 5% milk in TBS-T for: 4°C/ON with agitation. Blot was incubated in the primary antibody at a dilution of 1:1000 for 1h/RT with agitation in TBS-T. The antibody solution was decanted and the blot was rinsed briefly twice, then washed once for 3 times for 5 min in TBS-T at RT with agitation. Blot was incubated in matching secondary antibody (anti-rabbit IgG ALP conjugated AS09 607) diluted to 1:5000 in 5% milk in TBS-T 30min RT with agitation. The blot was washed 3x10min and developed with a following detection reagent: BCIP/NBT Plus, [AS19 BCIP-NBT-PLUS](#). Exposure time was 5 minutes. Courtesy Agrisera



30 µg of a total cell extract from *Chlamydomonas reinhardtii* and *E. coli* strains DC272 and DC271 were loaded on Criterion™, Tris-HCl 10% polyacrylamide gels (Biorad) and molecular weight compared to those of the PageRuler™ Plus Prestained Protein Ladder (Fermentas). After SDS-PAGE, gels were transferred to PVDF membranes (Biorad) by the Trans-Blot SD semidry Transfer Cell method (Biorad) for 1 hour at 10V. Blocking of the PVDF membrane has been done for 3 hours in TBST milk 5% and has been followed by overnight incubation at 4°C with the primary anti-ADH/ALDH antibodies 1:1000 in TBST milk 1%. After three intensive washes, the membrane was incubated for one hour at room temperature with the secondary HRP-conjugated goat anti-rabbit (Agrisera [AS09 602](#), in 1:50 000 dilution in TBST milk 1%). After three washes with TBST (10 minutes each), detection was achieved using chemiluminescent detection reagent. Exposure time was 2 minutes for *Chlamydomonas reinhardtii* sample and 10 seconds for *E. coli* samples.

E. coli strains DC272 and DC271 were provided by Professor David P. Clark, Southern Illinois University. The DC272 mutant strain is misregulated in AdhE expression so that the bacteria expresses the ADHE protein constitutively.

Courtesy Dr. Leonardo Magneschi, Scuola Superiore Sant'Anna, Italy