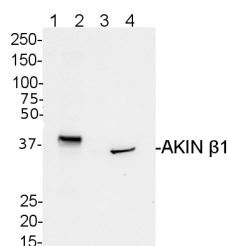


Product no **AS09 460****Anti-AKINB1 | SNF1-related protein kinase regulatory subunit beta-1****Product information**

Immunogen	KLH-conjugated peptide derived from <i>Arabidopsis thaliana</i> AKIN beta-1 Q84VQ1 , At5g21170
Host	Rabbit
Clonality	Polyclonal
Purity	Immunogen affinity purified serum in PBS pH 7.4.
Format	Lyophilized
Quantity	200 µg
Reconstitution	For reconstitution add 200 µl of sterile water
Storage	Store lyophilized/reconstituted at -20°C; once reconstituted make aliquots to avoid repeated freeze-thaw cycles. Please remember to spin the tubes briefly prior to opening them to avoid any losses that might occur from material adhering to the cap or sides of the tube.

Application information

Recommended dilution	2 µg/ml
Expected apparent MW	30.7 35 kDa
Confirmed reactivity	<i>Arabidopsis thaliana</i>
Predicted reactivity	<i>Arabidopsis thaliana</i>
Not reactive in	<i>Zea mays</i>
Selected references	Belda-Palazón et al. (2020) A dual function of SnRK2 kinases in the regulation of SnRK1 and plant growth. Nat Plants. 2020 Nov;6(11):1345-1353. doi: 10.1038/s41477-020-00778-w. Epub 2020 Oct 19. PMID: 33077877. Crozet et al. (2016) . SUMOylation represses SnRK1 signaling in Arabidopsis. Plant J. 2016 Jan;85(1):120-133. doi: 10.1111/tpj.13096. Emanuelle et al. (2015) . SnRK1 from Arabidopsis thaliana is an atypical AMPK. Plant J. 2015 Mar 3. doi: 10.1111/tpj.12813.

Application example

25 µg of empty vector (**1**), pCDNA 3.1 – HA- tagged AKIN-beta1 (**2**), pCDNA 3.1 – HA- tagged AKIN-beta2 (**3**), 50 µg of total protein from *Arabidopsis thaliana* leaves had been homogenized into 50 mM NaPO₄ pH 7.5, 20 mM KCl, 0.5 M sucrose, 0.2 mM PMSF, 10 mM DTT and protease inhibitor cocktail (Sigma, P9599). Extracts were separated on 10%NuPage Bis-Tris Novex SDS PAGE (Invitrogen) gels followed by a transfer for 60 min to PVDF membrane. Filters were blocked for 1h with 5% low-fat milk powder in PBS-T (0.1% TWEEN 20) and probed with anti-AKINβ 1 antibodies (2 µg/ml for 60 min at RT) followed by Protein G-HRP (Bio-Rad; 1:3 000 for 60 min at RT) in PBS-T. Antibody incubations were followed by washings in PBS-T (3 x 5 min). All washing steps were performed at RT with agitation. Signal was detected with ECL (Millipore) using CCD camera. Exposure time was 10 seconds.

Courtesy Dr. David Stapleton, Melbourne, Australia