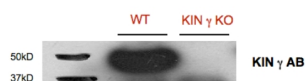


Product no **AS09 613****Anti-AKING1 | SNF1-related protein kinase regulatory subunit gamma 1****Product information**

<b>Immunogen</b>	KLH-conjugated peptide derived from <i>Arabidopsis thaliana</i> AKING1 UniProt: <a href="#">Q8LBB2</a> , TAIR: <a href="#">At3g48530</a>
<b>Host</b>	Rabbit
<b>Clonality</b>	Polyclonal
<b>Purity</b>	Immunogen affinity purified serum in BS pH 7.4.
<b>Format</b>	Lyophilized
<b>Quantity</b>	50 µg
<b>Reconstitution</b>	For reconstitution add 50 µl of sterile water
<b>Storage</b>	Store lyophilized/reconstituted at -20°C; once reconstituted make aliquots to avoid repeated freeze-thaw cycles. Please remember to spin the tubes briefly prior to opening them to avoid any losses that might occur from material adhering to the cap or sides of the tube.

**Application information**

<b>Recommended dilution</b>	1 : 2000 (WB)
<b>Expected   apparent MW</b>	48 kDa
<b>Confirmed reactivity</b>	<i>Arabidopsis thaliana</i>
<b>Predicted reactivity</b>	<i>Arabidopsis thaliana</i>
<b>Not reactive in</b>	<i>Chlamydomonas reinhardtii</i> , <i>Zea mays</i> , <i>Vitis vinifera</i>
<b>Selected references</b>	<a href="#">Emanuelle et al. (2015)</a> . SnRK1 from <i>Arabidopsis thaliana</i> is an atypical AMPK. <i>Plant J.</i> 2015 Mar 3. doi: 10.1111/tpj.12813. <a href="#">Ramon et al. (2013)</a> . The hybrid Four-CBS-Domain KIN $\gamma$ -subunit functions as the canonical $\gamma$ -subunit of the plant energy sensor SnRK1. <i>Plant j.</i> April 1.

**Application example**

10 µg of *Arabidopsis thaliana* Columbia WT and KIN gamma KO seedlings were grinded in MOPS loading buffer and heated for 5 min at 95°C. Samples were separated on 10 % SDS-PAGE and blotted 1h to PVDF. Blots were blocked with 5% milk for 1h at room temperature (RT) with agitation. Blot was incubated in the primary antibody at a dilution of 1: 2 000 for 2h at RT with agitation. The antibody solution was decanted and the blot was rinsed briefly twice, then washed once for 15 min and 3 times for 5 min in TBS-T at RT with agitation. Blot was incubated in secondary antibody, diluted to 1:4 000 in for 1h at RT with agitation. The blot was washed as above and developed for 5 min with ECL according to the manufacturers instructions. Exposure time was 15 seconds.

Courtesy of Dr. Matthew Ramon