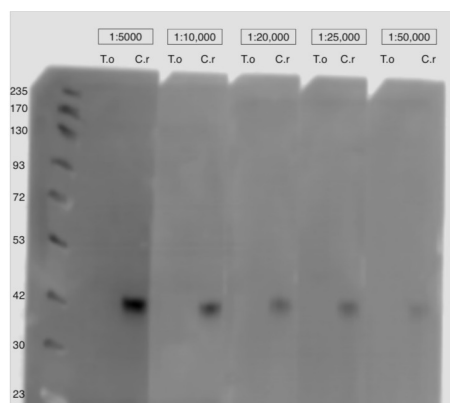


Product no **AS22 4832****Anti-Ble tag | Bleomycin resistance protein****Product information**

Immunogen	KLH-conjugated peptide derived from Bleomycin resistance protein from <i>Streptoalloteichus hindustanus</i> , UniProt: P17493
Host	Rabbit
Clonality	Polyclonal
Purity	Antigen affinity purified serum, in PBS pH 7.4
Format	Lyophilized
Quantity	50 µg
Reconstitution	For reconstitution, add 50 µl of sterile or deionized water.
Storage	Store lyophilized/reconstituted at -20 °C; once reconstituted make aliquots to avoid repeated freeze-thaw cycles. Please, remember to spin tubes briefly prior to opening them to avoid any losses that might occur from lyophilized material adhering to the cap or sides of the tubes.

Application information

Recommended dilution	1 : 5000 - 1 : 25 000 (WB)
Expected apparent MW	13.796 kDa
Confirmed reactivity	Ble tag
Predicted reactivity	Species of your interest not listed? Contact us
Not reactive in	No confirmed exceptions from predicted reactivity are currently known
Selected references	To be added when available, antibody available in July 2024.



2.5 µg/well of total protein extracted freshly from *Tetrademus obliquus*. Exact buffer components were: PBS and denatured with exact buffer components NuPAGE™ LDS Sample Buffer (2X) (Invitrogen) at 95 °C 10 min. Samples were separated in NuPAGE™ Bis-Tris Mini Protein Gels, 4–12%, (Thermoscientific) and blotted for 3 mins to nitrocellulose (pore size of 0.2 µm), using: iblot 2. Blot was blocked with 7.5 % milk TBS-T for: Overnight/18C with agitation. Blot was incubated in the primary antibody at a dilution of 1:5 000, 1:10 000, 1:20 000, 1:25 000, 1:50,000 for 1h/RT with agitation in 7.5% milk TBS-T with agitation. The antibody solution was decanted, and the blot was rinsed briefly twice, then washed once for 15 min and 3 times for 5 min in TBS-T at RT with agitation. Blot was incubated in matching secondary antibody (anti-rabbit IgG horse radish peroxidase conjugated) diluted to 1:10 000 in for 1h/RT with agitation. The blot was washed as above and developed with a following chemiluminescent detection reagent. Exposure time was 12 minutes using Li-Cor.