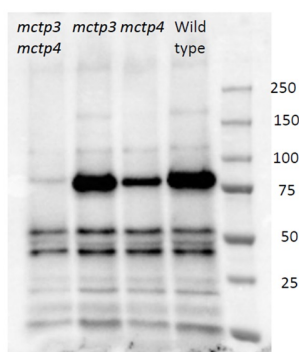


Product no **AS23 5001****Anti-FTIP4 | FT Interacting Protein 4****Product information**

Immunogen	KLH-conjugated peptide derived from <i>Arabidopsis thaliana</i> protein sequences of MCTP3 UniProt: Q9M2R0 TAIR: AT3G57880 MCTP4 Q9C8H3 TAIR: AT1G51570
Host	Rabbit
Clonality	Polyclonal
Purity	Antigen affinity purified serum, in PBS pH 7.4
Format	Lyophilized
Quantity	50 µg
Reconstitution	For reconstitution, add 50 µl, of sterile or deionized water.
Storage	Store lyophilized/reconstituted at -20 °C; once reconstituted make aliquots to avoid repeated freeze-thaw cycles. Please, remember to spin tubes briefly prior to opening them to avoid any losses that might occur from lyophilized material adhering to the cap or sides of the tubes.

Application information

Recommended dilution	1 : 1000 (WB)
Expected apparent MW	89 kDa
Confirmed reactivity	<i>Arabidopsis thaliana</i>
Predicted reactivity	<i>Arachis hypogaea</i> , <i>Capsicum annuum</i> , <i>Brassica napus</i> , <i>Cannabis sativa</i> , <i>Cucumis sativus</i> , <i>Glycine max</i> , <i>Gossypium sp.</i> , <i>Malus domestica</i> , <i>Manihot esculenta</i> , <i>Medicago truncatula</i> , <i>Nicotiana tabacum</i> , <i>Phaseolus vulgaris</i> , <i>Pisum sativum</i> , <i>Ricinus communis</i> , <i>Solanum lycopersicum</i> , <i>Solanum tuberosum</i> , <i>Spinacia oleracea</i> , <i>Vitis vinifera</i> Species of your interest not listed? Contact us
Not reactive in	No confirmed exceptions from predicted reactivity are currently known
Selected references	To be added when available. Antibody released in February 2025.

**Samples:***mctp3 mctp4* - *Arabidopsis thaliana* double knockout mutant*mctp3* - *Arabidopsis thaliana* single knockout mutant*mctp4* - *Arabidopsis thaliana* single knockout mutantWild type - *Arabidopsis thaliana* wild type

10 µg of protein/well of total protein extracted freshly from 7 days old *Arabidopsis thaliana* seedlings. Exact buffer components were 150 mM Tris-HCl, pH 7.5; 150 mM NaCl; 10 % glycerol; 10 mM, EDTA, pH 8; 1 mM NaF; 1 mM Na₂MoO₄; 10 mM DTT; 0.5 mM PMSF; 1% (v/v) P9599 protease inhibitor cocktail (Sigma); 1 % (v/v) Igepal) by incubating during 40 min at 4°C with continuous mixing in an end-over-end rocker. Samples were centrifuged for 20 min at 4°C and 9 000 g. Supernatants were filtered by gravity through Poly-PrepChromatography Columns and denatured at 60°C/20 min in Laemmli buffer (Tris-HCl pH 6.8 125 mM; 4% SDS; 20 % (v/v) glycerol; 2 % (v/v) beta mercaptoethanol; 0.01 % bromophenol blue) for SDS page loading. Samples were separated in the cold on 10 % SDS-PAGE and blotted for 1 h to nitrocellulose membrane (pore size of 0.2µm), using: wet transfer in the cold. Blot was blocked with 5 % nonfat milk in TBS-T at 4°C/ON with agitation. Following the



This product is **for research use only** (not for diagnostic or therapeutic use)

contact: support@agrisera.com

Agrisera AB | Box 57 | SE-91121 Vännäs | Sweden | +46 (0)935 33 000 | www.agrisera.com

washes, the blot was incubated in the primary antibody at a dilution of 1: 500 for 1h/RT with agitation in TBS-T. The antibody solution was decanted, and the blot was rinsed twice, then washed four times for 10 min with TBS-T at RT with agitation. Blot was incubated in matching secondary antibody (anti-rabbit IgG horse radish peroxidase conjugated) diluted to 1: 10 000 in for 45 min/RT with agitation. The blot was washed as above and developed with a following chemiluminescent detection reagent. Exposure time was 30 seconds.

Note: background signal can be decreased, by lowering protein load/well and increasing primary antibody dilution.

Courtesy of Dr. Marija Smokvarska, French National Centre for Scientific Research