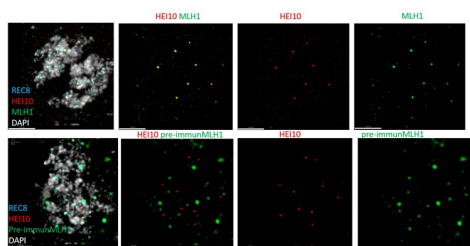


Product no **AS24 5042****Anti-MLH1 | DNA mismatch repair protein MLH1****Product information**

Immunogen	KLH-conjugated peptide derived from, <i>Arabidopsis thaliana</i> MLH1 protein, UniProt: Q9ZRV4 TAIR: AT4G09140
Host	Rabbit
Clonality	Polyclonal
Purity	Antigen affinity purified serum, in PBS pH 7.4
Format	Lyophilized
Quantity	50 µg
Reconstitution	For reconstitution, add 50 µl of sterile or deionized water.
Storage	Store lyophilized/reconstituted at -20 °C; once reconstituted make aliquots to avoid repeated freeze-thaw cycles. Please, remember to spin tubes briefly prior to opening them to avoid any losses that might occur from lyophilized material adhering to the cap or sides of the tubes.

Application information

Recommended dilution	1_100 - 1: 200 (IF)
Expected apparent MW	83.4 kDa
Confirmed reactivity	<i>Arabidopsis thaliana</i>
Predicted reactivity	<i>Arachis hypogaea</i> , <i>Brachypodium distachyon</i> , <i>Brassica napus</i> , <i>Cannabis sativa</i> , <i>Capsicum annuum</i> , <i>Citrus sp.</i> , <i>Cucumis sativus</i> , <i>Glycine max</i> , <i>Gossypium sp.</i> , <i>Hordeum vulgare</i> , <i>Malus domestica</i> , <i>Manihot esculenta</i> , <i>Medicago truncatula</i> , <i>Nicotiana tabacum</i> , <i>Oryza sativa</i> , <i>Phaseolus vulgaris</i> , <i>Pisum sativum</i> , <i>Populus sp.</i> , <i>Ricinus communis</i> , <i>Solanum lycopersicum</i> , <i>Solanum tuberosum</i> , <i>Sorghum bicolor</i> , <i>Spinacia oleracea</i> , <i>Theobroma cacao</i> , <i>Triticum sp.</i> , <i>Vitis vinifera</i> , <i>Zea mays</i> Species of your interest not listed? Contact us
Not reactive in	No confirmed exceptions from predicted reactivity are currently known
Selected references	To be added when available., antibody release in October 2025.

Type of material: meiocytes of *Arabidopsis thaliana*

Fixation: formaldehyde

Hydrophilization: no

Cell wall digestion: yes

Membrane permeabilization: PBS1X- Triton 1%- EDTA 1mM

Antigen retrieval: no Blocking buffer: 3% BSAxPBS1X -Tween 0.1%

Washing buffer: PBS1X -Tween 0.1%

Primary antibody dilution and incubation time: 1:200 72 h

Secondary antibody dilution and incubation time and supplier: Star green 1:250 abberior



This product is **for research use only** (not for diagnostic or therapeutic use)

contact: support@agrisera.com

Agrisera AB | Box 57 | SE-91121 Vännäs | Sweden | +46 (0)935 33 000 | www.agrisera.com

Co-staining of the nucleus (DAPI): yes

Cell wall and nucleus staining: no

Courtesy of Dr. Stephanie Durand, Max Planck Institute for Plant Breeding Research (MPIPZ), Germany