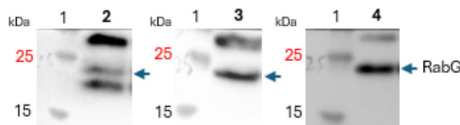


Product no **AS23 4986****Anti-RabG | Ras-related protein RABG (global antibody)****Product information**

Immunogen	KLH-conjugated peptide derived from <i>Arabidopsis thaliana</i> RabG, UniProt: Q9LS94 TAIR: AT3G18820 . The peptide used to elicit this antibody is conserved in the products of the following isoforms: AT1G22740.1, AT1G52280.1, AT1G49300.2, AT1G49300.1, AT3G16100.1, AT2G21880.2, AT2G21880.1, AT4G09720.3, AT4G09720.4, AT4G09720.1, AT2G21880.4, AT2G21880.3, AT4G09720.6, AT4G09720.5, AT4G09720.2
Host	Rabbit
Clonality	Polyclonal
Purity	Antigen affinity purified serum, in PBS pH 7.4
Format	Lyophilized
Quantity	50 µg
Reconstitution	For reconstitution, add 50 µl of sterile or deionized water.
Storage	Store lyophilized/reconstituted at -20°C; once reconstituted make aliquots to avoid repeated freeze-thaw cycles. Please, remember to spin tubes briefly prior to opening them to avoid any losses that might occur from lyophilized material adhering to the cap or sides of the tubes.

Application information

Recommended dilution	1 : 1000 (WB)
Expected apparent MW	Approx. 23 kDa (due different paralogs)
Confirmed reactivity	<i>Arabidopsis thaliana</i>
Predicted reactivity	<i>Arachis hypogaea</i> , <i>Brachypodium distachyon</i> , <i>Brassica napus</i> , <i>Cannabis sativa</i> , <i>Capsicum annuum</i> , <i>Citrus sp.</i> , <i>Cucumis sativus</i> , <i>Glycine max</i> , <i>Gossypium sp.</i> , <i>Hordeum vulgare</i> , <i>Malus domestica</i> , <i>Manihot esculenta</i> , <i>Medicago truncatula</i> , <i>Nicotiana tabacum</i> , <i>Oryza sativa</i> , <i>Pisum sativum</i> , <i>Populus sp.</i> , <i>Solanum lycopersicum</i> , <i>Solanum tuberosum</i> , <i>Sorghum bicolor</i> , <i>Theobroma cacao</i> , <i>Triticum sp.</i> , <i>Vitis vinifera</i> , <i>Zea mays</i>
	Species of your interest not listed? Contact us
Not reactive in	No confirmed exceptions from predicted reactivity are currently known
Selected references	To be added when available. Antibody available since March 2026.

**Samples:**

- 1 - MW Marker
- 2 - *Arabidopsis thaliana* wild type (Col-0) – cytoplasm
- 3 - *Arabidopsis thaliana* wild type (Col-0) – Inner membrane
- 4 - *Arabidopsis thaliana* wild type (Col-0) – Plasma membrane

Protein extracted freshly, from Wild Type (Col-0) *Arabidopsis thaliana* and mixed with 2x Laemmli sample buffer plus beta-mercaptoethanol and denatured at 95 °C for 5 min prior to SDS-PAGE analysis. Samples were separated on 4-20% SDS-PAGE at room temperature and blotted for 7 min to nitrocellulose Membrane (pore size of 0.2 µm), using: semi-wet transfer system. Blot was blocked with 1x TBS 1% Casein Blocker for 1h/RT. Blot was incubated in the primary antibody at a dilution of 1: 500 for ON/4°C with agitation. The antibody solution was decanted, then washed 3 times for 5 min in TBS-T at RT. Blot was incubated in matching secondary antibody (anti-rabbit IgG horse radish peroxidase conjugated) diluted to 1: 25k for 3h/RT with agitation. The blot was washed as above and developed with a following chemiluminescent detection reagent: SuperSignal West Pico Plus chemiluminescent ThermoScientific). Exposure time was a few seconds to 1 minutes.

Courtesy of Sahar Farami, University of Glasgow, UK