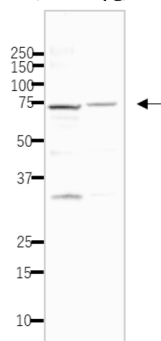


Product no **AS26 5139****Anti-RFa1/Rpa1 | Replication factor protein 1 (S.cerevisiae)****Product information**

- Immunogen** | Recombinant Rfa1 protein from *Saccharomyces cerevisiae*, UniProt: [P22336](#)
- Host** | Rabbit
- Clonality** | Polyclonal
- Purity** | Purified IgG fraction with protein A from rabbit antiserum
- Quantity** | 100 µg
- Storage** | Store at -20°C; make aliquots to avoid repeated freeze-thaw cycles. Please remember to spin the tubes briefly prior to opening them to avoid any losses that might occur from material adhering to the cap or sides of the tube.
- Additional information** | Concentration 1 mg/ml in PBS with 50% glycerol.

Application information

- Recommended dilution** | 1 : 200 (IP), 1 : 2000 (WB)
- Expected | apparent MW** | 70.3 kDa
- Confirmed reactivity** | *Saccharomyces cerevisiae*
- Predicted reactivity** | Species of your interest not listed? [Contact us](#)

62-150 62-520
×1/2000 1µg/ml

The extract of strain BY4741 (20µg) was separated on SDS-PAGE 12% gel. The anti-Rfa1 antibody was used at 1:2 000 dilution (62-150 antiserum) and 1µg/ml (IgG purified). As the second antibody was used at 1:10 000 dilution.