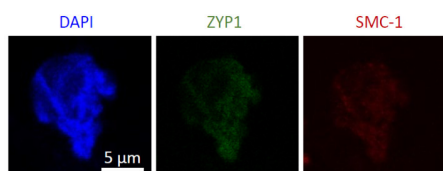


Product no **AS22 4824****Anti-SMC-1 | Structural maintenance of chromosomes protein 1****Product information**

Immunogen	KLH-conjugated peptide derived from SMC-1 of <i>Arabidopsis thaliana</i> , UniProt: Q6Q1P4 , GeneID: AT3G54670
Host	Rabbit
Clonality	Polyclonal
Purity	Immunogen affinity purified serum, in PBS pH 7.4
Format	Lyophilized
Quantity	50 µg
Reconstitution	For reconstitution add 50 µl, of sterile or deionized water.
Storage	Store lyophilized/reconstituted at -20°C; once reconstituted make aliquots to avoid repeated freeze-thaw cycles. Please, remember to spin tubes briefly prior to opening them to avoid any losses that might occur from lyophilized material adhering to the cap or sides of the tubes.

Application information

Recommended dilution	1 : 100 (IF)
Expected apparent MW	140 kDa
Confirmed reactivity	<i>Arabidopsis thaliana</i>
Predicted reactivity	Species of your interest not listed? Contact us
Not reactive in	No confirmed exceptions from predicted reactivity are currently known
Selected references	To be added when available, antibody available in May 2026.



SMC-1 (AS22 4824)

Type of material: Fresh flowers were dissected and digested with an enzyme mix to get isolated cells, which afterwards were treated with a detergent to dissolve the nuclear envelope, and then the chromatin was fixed in paraformaldehyde 4%.

Fixation: formaldehyde (paraformaldehyde 4% pH 8) X | Methanol, 37°C

Hydrophilization: no

Cell wall digestion: yes

Membrane permeabilization: DMSO-IGEPa, enzyme digestion Blocking buffer: BSA 3% in PBST (Triton 1%)

Washing buffer: PBST (Triton 1%)

Primary antibody dilution and incubation time: 1:200 in BSA 3% in PBST overnight at 4°C

Secondary antibody: goat anti-rabbit IgG, TRTC-conjugated, 1:100 in BSA 3% in PBST for 90 min at room temperature

Co-staining of the nucleus (DAPI): yes

Courtesy of Dr. Nadia Fernández Jiménez, Universidad Complutense de Madrid (UCM), Spain