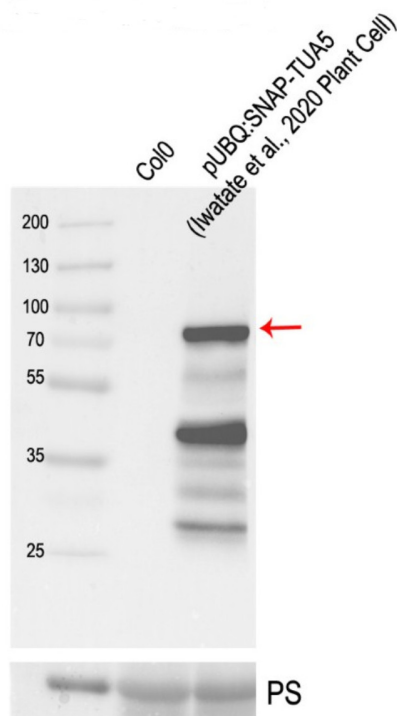


Product no **AS21 4606****Anti-SNAP/Clip Tag****Product information**

Immunogen	KLH-conjugated peptide derived from SNAP/Clip tag
Host	Rabbit
Clonality	Polyclonal
Purity	Antigen affinity purified serum, in PBS pH 7.4
Format	Lyophilized
Quantity	50 µg
Reconstitution	For reconstitution, add 50 µl of sterile or deionized water.
Storage	Store lyophilized/reconstituted at -20°C; once reconstituted make aliquots to avoid repeated freeze-thaw cycles. Please, remember to spin tubes briefly prior to opening them to avoid any losses that might occur from lyophilized material adhering to the cap or sides of the tubes.

Application information**Recommended dilution** 1 : 1000 - 1 : 5000 (WB)**Confirmed reactivity** SNAP/Clip tag**Selected references** To be added when available, antibody available in June 2025.

Samples: From the left: Arabidopsis thaliana wildtype Arabidopsis thaliana expressing pUBQ:SNAP-TUA5

10 days old Arabidopsis thaliana plants were grown in vitro and 100 mg of frozen tissue was grind in 300 µl Laemmli buffer (125 mM Tris HCl pH 6.8, 2.5 % SDS, 20% (v/v) glycerol), 0.01% bromophenol blue, +20 mg/ml DTT) was denatured at 65°C for 10 minutes and subjected to SDS-PAGE gel electrophoresis with 15 µg of protein load/line, at room temperature followed by semi dry transfer at room temperature to PVDF membrane (pore size 0.2 µm). Blocking was done with 5% milk 0.02% Tween20 in TBS for 1h at RT with agitation. Primary antibody in 2.5% milk, 0.02% Tween20 in TBS were used at 1:2000/ON at 4°C with agitation. Washing was done three times for 15 minutes in 2.5% milk, 0.02% Tween20 in TBS, followed by incubation with the secondary antibody in 2.5% milk, 0.02% tw20 in TBS diluted to 1:20 000/2h at RT with agitation, followed by three times wash for 15 min in 2.5% milk, 0.02% tw20 in TBS. Last wash was performed only in TBS. Antibody binding was visualized



This product is **for research use only** (not for diagnostic or therapeutic use)

contact: support@agrisera.com

Agrisera AB | Box 57 | SE-91121 Vännäs | Sweden | +46 (0)935 33 000 | www.agrisera.com

with West Dura (ThermoFisher, ref 34075). Exposure time was 1 second.

To decrease background signal, this antibody can be used in higher dilution 1: 5000/1h RT incubation combined with less sensitive detection reagent.

Courtesy of Dr.Alexandre Martinière, Institut for Plant Sciences of Montpellier (IPSiM), France