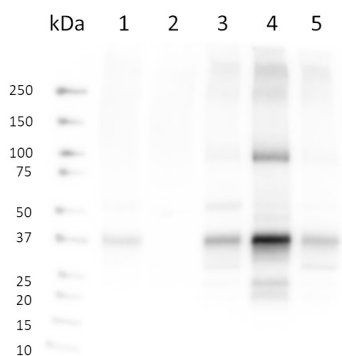


Product no **AS22 4827****Anti-SYP121 | Syntaxin 121****Product information**

Immunogen	KLH-conjugated peptide derived from <i>Arabidopsis thaliana</i> SYP121 protein sequence, UniProt: Q9ZSD4-1 , TAIR: AT3G11820
Host	Rabbit
Clonality	Polyclonal
Purity	Antigen affinity purified serum, in PBS pH 7.4
Format	Lyophilized
Quantity	50 µg
Reconstitution	For reconstitution add 50 µl, of sterile or deionized water.
Storage	Store lyophilized/reconstituted at -20°C; once reconstituted make aliquots to avoid repeated freeze-thaw cycles. Please, remember to spin tubes briefly prior to opening them to avoid any losses that might occur from lyophilized material adhering to the cap or sides of the tubes.

Application information

Recommended dilution	1 : 1000 (WB)
Expected apparent MW	37.9 kDa
Confirmed reactivity	<i>Arabidopsis thaliana</i>
Predicted reactivity	<i>Brassica napus</i> , <i>Brassica oleracea</i> , <i>Capsicum annum</i> , <i>Euphorbia peplus</i> , <i>Glycine max</i> , <i>Gossypium sp.</i> , <i>Hirschfeldia incana</i> , <i>Jatropha curcas</i> , <i>Malus domestica</i> , <i>Manihot esculenta</i> , <i>Medicago truncatula</i> , <i>Nicotiana tabacum</i> , <i>Pisum sativum</i> , <i>Raphanus sativus</i> , <i>Solanum tuberosum</i> , <i>Spinacia oleracea</i> , <i>Theobroma cacao</i> , <i>Vitis vinifera</i> Species of your interest not listed? Contact us
Not reactive in	<i>Dunaliella salina</i> , <i>Triticum aestivum</i>
Additional information	This antibody is also recognizing recombinant SYP121-GFP.
Selected references	To be added when available, antibody available in June 2024.

**Samples:**

Marker: Precision Plus Dual Color Standard (Biorad)

1-20 µg of *Arabidopsis thaliana* total protein extract2-20 µg of *Arabidopsis thaliana* cytosolic fraction3-20 µg of *Arabidopsis thaliana* microsomal fraction4-20 µg of *Arabidopsis thaliana* plasma membrane fraction5-20 µg of *Arabidopsis thaliana* other membranes fraction

Arabidopsis thaliana plants were grown for 13 days at 22°C with a time regime of 16hday/8h night. Plants were grown on 1/2MS agar plates, pH=5.8. Whole plants were used for the experiment.

Samples were extracted with 50 mM HEPES pH 7.5, 400 mM sucrose, 100 mM KCl, 100 mM MgCl₂, Complete Protease Inhibitor Cocktail; 3-8

resuspend with 5 mM phosphate buffer pH 7,8 and denaturated with Laemmli sample buffer (Biorad) with XT reducing agent (Biorad) at 65 °C (1-5) or 70 °C (6-8) for 5 min. Samples were separated on 4-20% Mini-PROTEAN TGX stain free precast gel and blotted 7 min to PVDF (pore size of 0,2 µm) using Turbo Blot. Blot was blocked with 5% milk in TBS-T for 1h/RT with agitation. Blot was incubated with antiSYP121 (AS 22 4827) at a dilution 1:1000 ON/4 °C in TBS-T. The antibody solution was decanted and the blot was washed once for 15 min and 3 times for 5 min in TBS-T at RT with agitation. Blot was incubated in Goat anti-Rabbit IgG HRP conjugated (Agrisera AS09602-trial) diluted to 1:25000 in 5% milk in TBS-T for 1h/RT with agitation. The blot was washed as above and developed for 5 min with Agrisera ECLBright. Exposure time was 2 seconds.

Courtesy of Dr. Roman Hudeček, Integrative Structural Biology, IEB CAS CZ, Czech Republic