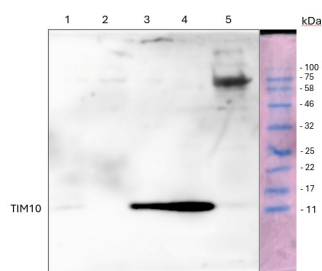


Product no **AS23 4950****Anti-TIM10| Mitochondrial import inner membrane translocase subunit TIM10****Product information**

<b>Immunogen</b>	KLH-conjugated, unique peptide derived from <i>Arabidopsis thaliana</i> TIM10 protein sequence. UniProt: <a href="#">Q9ZW33</a> TAIR: <a href="#">AT2G29530</a>
<b>Host</b>	Rabbit
<b>Clonality</b>	Polyclonal
<b>Purity</b>	Antigen affinity purified serum, in PBS pH 7.4
<b>Format</b>	Lyophilized
<b>Quantity</b>	50 µg
<b>Reconstitution</b>	For reconstitution, add 50 µl of sterile or deionized water.
<b>Storage</b>	Store lyophilized/reconstituted at -20 °C; once reconstituted make aliquots to avoid repeated freeze-thaw cycles. Please, remember to spin tubes briefly prior to opening them to avoid any losses that might occur from lyophilized material adhering to the cap or sides of the tubes.

**Application information**

<b>Recommended dilution</b>	1: 500 - 1 : 2000 (WB)
<b>Expected   apparent MW</b>	9.3   11 kDa
<b>Confirmed reactivity</b>	<i>Arabidopsis thaliana</i> , <i>Pisum sativum</i>
<b>Predicted reactivity</b>	<i>Carica papaya</i> , <i>Brassica rapa</i> , <i>Eutrema salsugineum</i> , <i>Zea mays</i> Species of your interest not listed? <a href="#">Contact us</a>
<b>Not reactive in</b>	No confirmed exceptions from predicted reactivity are currently known
<b>Selected references</b>	To be added when available. Antibody released in October 2024.

**Samples:**

- 1 - 50 µg of *Arabidopsis thaliana* seedling isolated mitochondria extract #1  
 2 - 50 µg of *Arabidopsis thaliana* seedling isolated mitochondria extract #2  
 3 - 50 µg of *Arabidopsis thaliana* cell culture isolated mitochondria extract  
 4 - 50 µg of *Pisum sativum* seedling isolated mitochondria extract 5 - 50 µg of *Oryza sativa* seedling isolated mitochondria extract Mark: Blue Protein Standard MW markers

50 µg/well of total protein extracted freshly from the seedlings of *Arabidopsis thaliana*, *Pisum sativum* and *Oryza sativa*. The mitochondria were extracted according to Murcha and Whelan (2015) mitochondria isolation protocol pages 1-12. Samples were separated in the cold on 14 % SDS-PAGE and blotted for 1 h to nitrocellulose (pore size of 0.45 µm), using semi-dry method in the cold. Blot was blocked with 10 % skim milk for: 4 °C/ON with agitation. Blot was incubated in the primary antibody at a dilution of 1: 500 in 1X TBS-Tween for ON/4 °C with agitation. The antibody solution was decanted, and the blot was rinsed briefly twice, then washed once for 15 min and 3 times for 5 min in TBS-T at RT with agitation. Blot was incubated in matching secondary antibody (anti-rabbit IgG horse radish peroxidase conjugated) diluted to 1: 10 000 in 1X TBS-Tween for 1h/RT with agitation. The blot was washed as above and developed with a following chemiluminescent detection reagent. Exposure time was 10 minutes.

Mitochondria were extracted according to the method described here: MURCHA, M. W. & WHELAN, J. 2015. Isolation of Intact Mitochondria from the Model Plant Species *Arabidopsis thaliana* and *Oryza sativa*. In: WHELAN, J. & MURCHA, M. W. (eds.) Plant Mitochondria: Methods and Protocols. New York, NY: Springer New York.



This product is **for research use only** (not for diagnostic or therapeutic use)

**contact: [support@agrisera.com](mailto:support@agrisera.com)**

Agrisera AB | Box 57 | SE-91121 Vännäs | Sweden | +46 (0)935 33 000 | [www.agrisera.com](http://www.agrisera.com)

Courtesy of Valencia Marisa, The University of Western Australia, Australia