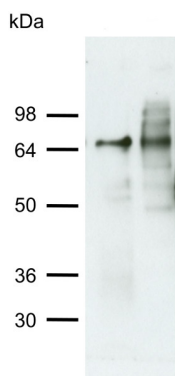


Product no **AS15 2831****Anti-ATG4 | Autophagy protein 4 (algal)****Product information**

Immunogen	Recombinant ATG4 of <i>Chlamydomonas reinhardtii</i> , Gene ID Cre12.g510100
Host	Rabbit
Clonality	Polyclonal
Purity	Serum
Format	Lyophilized
Quantity	50 µl
Reconstitution	For reconstitution add 50 µl of sterile water
Storage	Store lyophilized/reconstituted at -20°C; once reconstituted make aliquots to avoid repeated freeze-thaw cycles. Please remember to spin the tubes briefly prior to opening them to avoid any losses that might occur from material adhering to the cap or sides of the tube.
Additional information	This antibody is recognizing 25 ng of recombinant CrATG4 This product can be sold containing ProClin if requested.

Application information

Recommended dilution	1 : 5000 (WB)
Expected apparent MW	64.2 70 kDa
Confirmed reactivity	<i>Chlamydomonas reinhardtii</i> , <i>Chlorococcum dorsiventrale</i>
Predicted reactivity	<i>Coccomyxa subellipsoidea C-169</i> , <i>Tetraselmis sp. GSL018</i> , <i>Volvox carteri</i> Species of your interest not listed? Contact us
Not reactive in	<i>Arabidopsis thaliana</i> , <i>Capsicum annuum</i> , <i>Nicotiana tabacum</i>
Additional information	Technical details how to work with this antibody are provided here: Pérez-Pérez et al. (2016) . Control of Autophagy in <i>Chlamydomonas</i> Is Mediated through Redox-Dependent Inactivation of the ATG4 Protease. <i>Plant Physiol.</i> 2016 Dec;172(4):2219-2234.
Selected references	Chen et al. (2016) . The role of nitric oxide signalling in response to salt stress in <i>Chlamydomonas reinhardtii</i> . <i>Planta.</i> 2016 Sep;244(3):651-69. doi: 10.1007/s00425-016-2528-0. Epub 2016 Apr 26. Pérez-Pérez et al. (2016) . Control of Autophagy in <i>Chlamydomonas</i> Is Mediated through Redox-Dependent Inactivation of the ATG4 Protease. <i>Plant Physiol.</i> 2016 Dec;172(4):2219-2234.

Application example

10 ng of recombinant, purified *Chlamydomonas reinhardtii* ATG4 (**left**) and 15 µg of *Chlamydomonas reinhardtii* total cell extract (**right**) were separated on 12 % SDS-PAGE and blotted 1h to nitrocellulose membrane using semi-dry transfer. Blots were blocked with 5 % dry milk in PBS for 1h at room temperature (RT) with agitation. Blot was incubated in the primary antibody at a dilution of 1:5000 over night at 4 °C with agitation. The antibody solution was decanted and the blot was rinsed briefly twice, then washed once for 15 min and 3 times for 5 min in TBS-T at RT with agitation. Blot was incubated in secondary antibody (anti-rabbit IgG horse radish peroxidase conjugated, [AS09 602](#), Agrisera) diluted to 1:10000 in 5 % dry milk for 1h at RT with agitation. The blot was washed as above and developed for 5 min with chemiluminescent detection reagent,

Agrisera

Part of Olink® Group 

This product is **for research use only** (not for diagnostic or therapeutic use)

contact: support@agrisera.com

Agrisera AB | Box 57 | SE-91121 Vännäs | Sweden | +46 (0)935 33 000 | www.agrisera.com

according to the manufacturer's instructions. Exposure time was 30 seconds

Courtesy of María Esther Pérez-Pérez and Jose L. Crespo, CSIC, Spain