

Product no **AS16 3976****Anti-AtpB | Beta subunit of ATP synthase, mitochondrial****Product information**

**Immunogen** | KLH-conjugated synthetic peptide derived from available plant, algal mitochondrial sequences of beta subunits of F-type ATP synthases, including *Arabidopsis thaliana* ATP synthase subunit beta-1 UniProt:[P83483](#), TAIR:[AT5G08670](#) ATP synthases subunit beta-2 UniProt:[P83484](#), TAIR: [AT5G08690](#), ATPase subunit beta-3, UniProt: [Q9C5A9](#), TAIR:[AT5G08680](#), which belong to mitochondrial respiratory chain complex I.

**Host** | Rabbit**Clonality** | Polyclonal**Purity** | Serum**Format** | Lyophilized**Quantity** | 50 µl**Reconstitution** | For reconstitution add 50 µl of sterile water

**Storage** | Store lyophilized/reconstituted at -20°C; once reconstituted make aliquots to avoid repeated freeze-thaw cycles. Please remember to spin the tubes briefly prior to opening them to avoid any losses that might occur from material adhering to the cap or sides of the tube.

**Additional information** | Lack of antibody reactivity was confirmed on chloroplast fraction.

This product can be sold containing ProClin if requested.

**Application information****Recommended dilution** | 1 : 1000-1 : 5000 (WB)

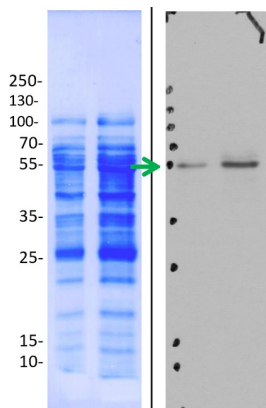
**Expected | apparent MW** | 59.6 | 55 kDa

**Confirmed reactivity** | *Arabidopsis thaliana*, *Brassica oleracea* var. botrytis cv. 'Diadom'**Predicted reactivity** | *Chlamydomonas reinhardtii*, *Nicotiana tabacum*, *Oryza sativa*, *Phaeodactylum tricornutum*

Species of your interest not listed? [Contact us](#)

**Not reactive in** | *Dunaliella salina*

**Selected references** | [Wei et al. \(2019\)](#). Arabidopsis mtHSC70-1 plays important roles in the establishment of COX-dependent respiration and redox homeostasis. J Exp Bot. 2019 Aug 6. pii: erz357. doi: 10.1093/jxb/erz357.

**Application example**

10 and 20 µg of mitochondrial proteins from cauliflower (*Brassica oleracea* var. botrytis cv. 'Diadom') curds (inflorescences) isolated as described by Rurek et al., 2015 (doi: 10.1016/j.bbabo.2015.01.005) were denatured with standard sample buffer (final concentrations in the sample: 2% SDS, 10% glycerol, 50 mM Tris-HCl pH 6.8, 0.1% bromophenol blue, 1% b-mercaptoethanol) at 80°C for 10 min. Proteins were separated on 12% SDS-PAGE and blotted 1h to Immobilon-P (Millipore) using standard Towbin buffer (25 mM Tris, 192 mM glycine, pH 8.3, 20% methanol) supplemented with SDS (0.1%) and semi-dry transfer apparatus (TE77 PWR, Hoefer). Blots were CBB R250 briefly stained (CBB was dissolved in 50% methanol, 7% acetic acid), destained (with this solution without CBB) and wet-scanned (Laser Jet Pro 400 color MFP scanner,

This product is **for research use only** (not for diagnostic or therapeutic use)

contact: [support@agrisera.com](mailto:support@agrisera.com)

Agrisera AB | Box 57 | SE-91121 Vännäs | Sweden | +46 (0)935 33 000 | [www.agrisera.com](http://www.agrisera.com)

Hewlett-Packard). Blots were blocked with 5% skimmed milk (dissolved in PBS-T containing 0.1% Tween 20) in 1h, RT with agitation. Blots were incubated in the primary antibody at a dilution of 1: 1000 for overnight (15 h) at +4°C with agitation in PBS-T. The antibody solution was decanted and the blot was rinsed briefly, then washed 3 times for 10 min in copious amounts of PBS-T at RT with agitation. Blot was incubated in secondary antibody (anti-rabbit IgG horse radish peroxidase conjugated, from Agrisera; product # [AS09\\_602](#)) diluted to 1:30 000 in 2% milk/ PBS-T for 1h at RT with agitation. The blot was washed as above and developed for 1 min with chemiluminescent detection reagent. Exposure time was: 10, 20, 30 seconds and 1 minute and is indicated on the figure above. MW marker: PageRuler Plus (product #26619) Thermo Scientific (on Western images as dots at the left side on the panels). In red- lot 15D 3650, in blue- lot 16D 2201.

Courtesy of Dr. Michał Rurek, Department of Molecular & Cellular Biology, Faculty of Biology, Adam Mickiewicz University in Poznań, Poland