

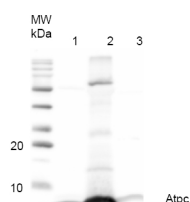
Product no **AS05 071****Anti-AtpH | ATP synthase subunit c (chloroplastic)****Product information**

|                       |   |
|-----------------------|---|
| <b>Immunogen</b>      | Purified c subunit from <i>Spinacia oleracea</i> UniProt: <a href="#">P69447</a> .  |
| <b>Host</b>           | Rabbit  |
| <b>Clonality</b>      | Polyclonal  |
| <b>Purity</b>         | Serum   |
| <b>Format</b>         | Lyophilized   |
| <b>Quantity</b>       | 200 µl  |
| <b>Reconstitution</b> | For reconstitution add 200 µl of sterile water  |
| <b>Storage</b>        | Store lyophilized/reconstituted at -20°C; once reconstituted make aliquots to avoid repeated freeze-thaw cycles. Please remember to spin the tubes briefly prior to opening them to avoid any losses that might occur from material adhering to the cap or sides of the tube. |

**Additional information** | **This product can be sold containing proclin if requested.**

**Application information**

|                               |   |
|-------------------------------|---|
| <b>Recommended dilution</b>   | 1 : 1000-1 : 10 000 (WB)  |
| <b>Expected   apparent MW</b> | 8 kDa (for <i>Arabidopsis thaliana</i> )  |
| <b>Confirmed reactivity</b>   | <i>Arabidopsis thaliana</i> , <i>Nicotiana benthamiana</i> , <i>Spinacia oleracea</i> , <i>Thermosynechococcus elongatus</i>  |
| <b>Predicted reactivity</b>   | Algae, <i>Cannabis sativa</i> , <i>Cyclotella cryptica</i> , <i>Glycine max</i> , <i>Oryza sativa</i> , <i>Physcomitrium patens</i> , <i>Phaeodactylum tricornutum</i> , <i>Pisum sativum</i> , <i>Populus alba</i> , <i>Pinus thunbergii</i> , <i>Thalassiosira pseudonana</i> , <i>Zea mays</i> , <i>Vitis vinifera</i>   |
|                               | Species of your interest not listed? <a href="#">Contact us</a>   |
| <b>Not reactive in</b>        | No confirmed exceptions from predicted reactivity are currently known   |
| <b>Additional information</b> | Note that increased incubation at 95°C (20-30 min) prior to loading is recommended to break the multimeric c-mer structure, detection of partial ring structures (e.g. 5 or 6 subunits) may occur   |
| <b>Selected references</b>    | <a href="#">Nath et al. (2016)</a> . A Nitrogen-Fixing Subunit Essential for Accumulating 4Fe-4S-Containing Photosystem I Core Proteins. <i>Plant Physiol.</i> 2016 Dec;172(4):2459-2470. Epub 2016 Oct 26.<br><a href="#">Lawrence et al. (2010)</a> . Recombinant production and purification of the subunit c of chloroplast ATP synthase. <i>Protein Expression and Purification</i> 76: 15-24. |

**Application example**

0.7 µg of purified ATP-synthase complex from *Spinacia oleracea* (CF0F1) (1), 15.3 µg of purified ATP-synthase complex (CF0F1) from *Nicotiana benthamiana* (2) and 48.6 µg of *Thermosynechococcus elongatus* thylakoid preparation (3) were separated on 12% polyacrylamide gel and blotted on PVDF membrane. Filters were blocked (0.5h), incubated with 1: 1000 anti-AtpH antibodies (1h), followed by incubation with 1: 5 000 secondary anti-rabbit antibody (1.25h), coupled to HRP and visualized with chemiluminescence detection reagent.