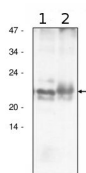


Product no **AS10 1604****Anti-AtpF | CF0I subunit of ATP synthase****Product information**

Immunogen	Isolated CF ₀ I subunit of the chloroplast ATP synthase complex of <i>Arabidopsis thaliana</i> , UniProt UniProt::P56759, TAIR: ATCG00130
Host	Rabbit
Clonality	Polyclonal
Purity	Serum
Format	Liquid
Quantity	100 µl
Storage	Store at short-term 4 °C, Long-term -20 °. Repeated freezing and thawing is not recommended. It contains 0,01% sodium azide.

Additional information | This product can be sold containing proClin if requested**Application information**

Recommended dilution	1 : 5000 (BN-PAGE), (WB)
Expected apparent MW	21 kDa
Confirmed reactivity	<i>Arabidopsis thaliana</i> , <i>Chlamydomonas reinhardtii</i> , <i>Spinacia oleracea</i> , <i>Ulva prolifera</i>
Predicted reactivity	<i>Cannabis sativa</i> , Higher plants, <i>Phaseolus vulgaris</i> , <i>Pisum sativum</i> Species of your interest not listed? Contact us
Not reactive in	No confirmed exceptions from predicted reactivity are currently known
Selected references	<p>Galvis et al. (2020). H⁺ transport by K⁺ EXCHANGE ANTIporter3 promotes photosynthesis and growth in chloroplast ATP synthase mutants. Plant Physiol. pp.01561.2019. doi: 10.1104/pp.19.01561.</p> <p>Koochak et al. (2019). The structural and functional domains of plant thylakoid membranes. Plant J. 2019 Feb;97(3):412-429. doi: 10.1111/tbj.14127.</p> <p>Lv et al. (2019). Uncoupled Expression of Nuclear and Plastid Photosynthesis-Associated Genes Contributes to Cell Death in a Lesion Mimic Mutant. Plant Cell. 2019 Jan;31(1):210-230. doi: 10.1105/tpc.18.00813.</p> <p>Gao et al. (2018). A supercomplex, approximately 720 kDa and composed of both photosystem reaction centers, dissipates excess energy by PSI in green macroalgae under salt stress. Plant Cell Physiol. 2018 Oct 8. doi: 10.1093/pcp/pcy201.</p> <p>Koochak et al. (2018). The structural and functional domains of plant thylakoid membranes. Plant J. 2018 Oct 12. doi: 10.1111/tbj.14127. (BN-PAGE)</p> <p>Rantala and Tikkanen et al. (2018). Phosphorylation induced lateral rearrangements of thylakoid protein complexes upon light acclimation. Plant Direct Vol. 2, Issue 2.</p> <p>Fristedt et al. (2015). The thylakoid membrane protein CGL160 supports CF1CF0 ATP synthase accumulation in <i>Arabidopsis thaliana</i>. PLoS One. 2015 Apr 2;10(4):e0121658. doi: 10.1371/journal.pone.0121658.</p> <p>Grieco et al. (2015). Light-harvesting II antenna trimers connect energetically the entire photosynthetic machinery - including both photosystems II and I. Biochim Biophys Acta. 2015 Jun-Jul;1847(6-7):607-19. doi: 10.1016/j.bbabi.2015.03.004. Epub 2015 Apr 3.</p> <p>Yap et al. (2015). AEF1/MPR25 is implicated in RNA editing of plastid atpF and mitochondrial nad5 and also promotes atpF splicing in <i>Arabidopsis</i> and rice. Plant J. 2015 Jan 13. doi: 10.1111/tbj.12756.</p>

Application example

20 µg of chloroplast fraction from *Arabidopsis thaliana* (**1**) and *Spinacia oleracea* (**2**) were separated on 12 % SDS-PAGE and blotted 1h to PVDF. Blots were blocked with 2 % non-fat milk powder in 1xTBS-T for 1h at room temperature (RT) with agitation. Blot was incubated in the primary antibody at a dilution of 1 : 5 000 for 1h at RT with agitation. The antibody solution was decanted and the blot was rinsed briefly twice, then washed once for 15 min and 3 times for 5 min in TBS-T at RT with agitation. Blot was incubated in secondary antibody (anti-rabbit IgG horse radish peroxidase conjugated) diluted to 1:10 000 in for 1h at RT with agitation. The blot was washed as above and developed for 5 min with ECL



This product is **for research use only** (not for diagnostic or therapeutic use)

contact: support@agrisera.com

Agrisera AB | Box 57 | SE-91121 Vännäs | Sweden | +46 (0)935 33 000 | www.agrisera.com

according to the manufacturer's instructions.