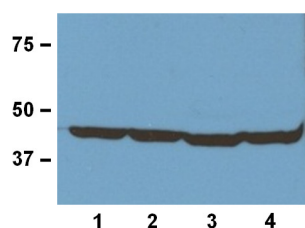


Product no **AS20 4381****Anti-Beta-Actin, (animal), mouse monoclonal****Product information****Immunogen** Synthetic peptide derived from the N-terminal of the human beta-actin**Host** Mouse**Clonality** Monoclonal**Subclass/isotype** IgG2b**Purity** IgG2b purified on Protein A n 10mM PBS, pH 7.2, with 1% BSA and 0.05% sodium azide.**Format** Lyophilized**Quantity** 100 µg**Storage** Store at -20 °C for 3 years or more, Reconstitute with distilled water to desired concentration before use, Aliquot to avoid repeated freeze-thaw cycles, Store aliquots at 4 °C for several days to weeks**Additional information** 10mM PBS, pH 7,2, with 1% BSA and 0,05% sodium azide**Application information****Recommended dilution** 1: 1000 - 1: 5000 (WB), for other techniques end user needs to determine most optimal dilution**Expected | apparent MW** 42 kDa**Confirmed reactivity** Chicken, human, mouse, rabbit, rat**Not reactive in** No confirmed exceptions from predicted reactivity are currently known**Additional information** This antibody recognizes both the native and denatured forms of Beta-Actin from a wide range of species**Application example**

20 µg of tissue lysate from human (1), mouse (2), rat (3), rabbit (4) were extracted and separated on SDS-PAGE and blotted to a membrane. Primary antibodies were used at a dilution of 1: 1000 (1 µg/ml). Reaction was developed by chemiluminescence.