

Product no **AS20 4381**

## Anti-Beta-Actin, (animal), mouse monoclonal

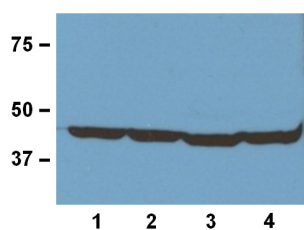
### Product information

<b>Immunogen</b>	Synthetic peptide derived from the N-terminal of the human beta-actin
<b>Host</b>	Mouse
<b>Clonality</b>	Monoclonal
<b>Subclass/isotype</b>	IgG2b
<b>Purity</b>	IgG2b purified on Protein A n 10mM PBS, pH 7.2, with 1% BSA and 0.05% sodium azide.
<b>Format</b>	Lyophilized
<b>Quantity</b>	100 µg
<b>Storage</b>	Store at -20 °C for 3 years or more, Reconstitute with distilled water to desired concentration before use, Aliquot to avoid repeated freeze-thaw cycles, Store aliquots at 4 °C for several days to weeks
<b>Additional information</b>	10mM PBS, pH 7,2, with 1% BSA and 0,05% sodium azide

### Application information

<b>Recommended dilution</b>	1: 1000 - 1: 5000 (WB), for other techniques end user needs to determine most optimal dilution
<b>Expected   apparent MW</b>	42 kDa
<b>Confirmed reactivity</b>	Chicken, human, mouse, rabbit, rat
<b>Not reactive in</b>	No confirmed exceptions from predicted reactivity are currently known
<b>Additional information</b>	This antibody recognizes both the native and denatured forms of Beta-Actin from a wide range of species

#### Application example



20 µg of tissue lysate from human (1), mouse (2), rat (3), rabbit (4) were extracted and separated on SDS-PAGE and blotted to a membrane. Primary antibodies were used at a dilution of 1: 1000 (1 µg/ml). Reaction was developed by chemiluminescence.