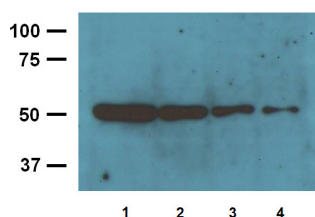


Product no **AS20 4382****Anti-Beta-tubulin, (loading control antibody), mouse monoclonal****Product information****Immunogen** Synthetic peptide derived from the N-terminal of the human beta-tubulin**Host** Mouse**Clonality** Monoclonal**Subclass/isotype** IgG2a**Purity** IgG2a purified on Protein A n 10mM PBS, pH 7.2, with 1% BSA and 0.05% sodium azide.**Format** Lyophilized**Quantity** 100 µg**Storage** Store at -20 °C for 3 years or more, Reconstitute with distilled water to desired concentration before use, Aliquot to avoid repeated freeze-thaw cycles, Store aliquots at 4 °C for several days to weeks**Additional information** 10mM PBS, pH 7,2, with 1% BSA and 0,05% sodium azide**Application information****Recommended dilution** 1: 2000 - 1: 5000 (WB), for other techniques end user needs to determine most optimal dilution**Expected | apparent MW** 50 kDa**Confirmed reactivity** Chicken, human, monkey, mouse, rat, rabbit**Not reactive in** No confirmed exceptions from predicted reactivity are currently known**Additional information** This antibody recognizes both the native and denatured forms of Beta-tubulin**Application example**

Varied amounts of mouse brain tissue lysate: 10 µg/lane **(1)**, 5 µg/lane **(2)**, 2.5/lane µg **(3)**, 1.25 µg/lane **(4)** were extracted and separated on SDS-PAGE and blotted to a membrane. Primary antibodies were used at a dilution of 1: 4000 (0.25 µg/ml). Reaction was developed by chemiluminescence.