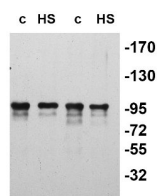


Product no **AS08 355****Anti-slr0156 | ATP-dependent chaperone clpB****Product information**

Immunogen	recombinant slr0156 protein, derived from <i>Synechocystis</i> PCC 6803 strain slr0156 sequence. This protein is annotated as ClpB1 in a data base but was originally named ClpB2 according to the paper of Giese and Vierling (2002) .
Host	Rabbit
Clonality	Polyclonal
Purity	Serum
Format	Lyophilized
Quantity	100 µl
Reconstitution	For reconstitution add 100 µl of sterile water
Storage	Store lyophilized/reconstituted at -20 °C; once reconstituted make aliquots to avoid repeated freeze-thaw cycles. Please remember to spin the tubes briefly prior to opening them to avoid any losses that might occur from material adhering to the cap or sides of the tube.

Application information

Recommended dilution	1 : 3000 (WB)
Expected apparent MW	101.4 100 kDa (<i>Synechocystis</i>)
Confirmed reactivity	<i>Synechocystis</i> PCC 6803
Predicted reactivity	Cyanobacteria Species of your interest not listed? Contact us
Not reactive in	No confirmed exceptions from predicted reactivity are currently known

Application example

ClpB2 slr0156

10 µg of total protein from *Synechocystis* PCC 6803 (with deleted slr 1641, two left lanes) in controlled (**C**) and heat shocked conditions (**HS**) was separated on 8% PAA gel and blotted on nitrocellulose membrane. Filters were blocked (1h), incubated with 1: 3000 anti-slr0156 antibodies (2h) followed by incubation with 1: 2500 secondary anti-rabbit (1h) coupled to HRP and visualization with chemiluminescent detection reagent. Deletion of slr0156 protein is not possible, therefore there is still a band in two left lanes.

Courtesy of Courtesy of Dr. Elizabeth Vierling, University of Massachusetts, USA