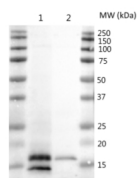


Product no **AS19 4289****Anti-CURT1B | Curvature thylakoid 1B****Product information**

Immunogen	KLH-conjugated synthetic peptide derived from <i>Arabidopsis thaliana</i> CURT1B sequence, UniProt: Q8LCA1 , TAIR: At2g46820
Host	Rabbit
Clonality	Polyclonal
Purity	Immunogen affinity purified serum in PBS pH 7.4.
Format	Lyophilized
Quantity	50 µg
Reconstitution	For reconstitution add 50 µl of sterile water
Storage	Store lyophilized/reconstituted at -20°C; once reconstituted make aliquots to avoid repeated freeze-thaw cycles. Please remember to spin the tubes briefly prior to opening them to avoid any losses that might occur from material adhering to the cap or sides of the tube.

Application information

Recommended dilution	1 : 2000 (WB)
Expected apparent MW	18.48 kDa
Confirmed reactivity	<i>Arabidopsis thaliana</i>
Predicted reactivity	<i>Nicotiana tabacum</i> , <i>Zea mays</i>
	Species of your interest not listed? Contact us

Application example

Samples with 2 µg of total chlorophyll from *Arabidopsis thaliana* thylakoid fractions were denatured with 250mM DTT at 95°C 5 min, extracts were separated on 12% SDS-PAGE and blotted 7 min to PVDF using semi-dry transfer. Blot was incubated in the primary antibody (and 5% milk) at a dilution of 1: 2000 ON/4°C with agitation. The antibody solution was decanted and the blot was rinsed briefly twice, then washed once for 15 min and 3 times for 5 min in TBS-T at RT with agitation. Blot was incubated in Agrisera matching secondary antibody (anti-rabbit IgG horse radish peroxidase conjugated [AS09 602](#)) diluted to 1:25 000 in TBS-T for 1h/RT with agitation. The blot was washed as above and developed with Agrisera chemiluminescent detection reagent, [ECLSuperBright](#). Exposure time was 5 seconds.

Courtesy of Guillem Borràs I Gas, Pribil Lab, University of Copenhagen, Denmark