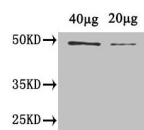


Product no **AS19 4339****Anti-Cyc1 | Cyclin-B1-1****Product information**

<b>Immunogen</b>	Recombinant Cyclin-B1-1 protein derived from <i>Arabidopsis thaliana</i> sequence, amino acids: 1-428. UniProt: <a href="#">P30183</a> TAIR: <a href="#">AT4G37490</a>
<b>Host</b>	Rabbit
<b>Clonality</b>	Polyclonal
<b>Purity</b>	>95%, Protein G purified to a total immunoglobulin G fraction.
<b>Format</b>	Liquid
<b>Quantity</b>	100 µg
<b>Storage</b>	Store at -20 °C or -80 °C, avoid repeated freeze-thaw cycles. Make aliquots to avoid repeated freeze-thaw cycles. Please remember to spin the tubes briefly prior to opening them to avoid any losses that might occur from material adhering to the cap or sides of the tube.
<b>Additional information</b>	Preservative: 0.03% Proclin 300. Preparation contains: 50% Glycerol, 10 mM PBS, pH 7.4 Reactivity of this antibody on endogenous extract remains to be confirmed.

**Application information**

<b>Recommended dilution</b>	1:1000-1:5000 (WB)
<b>Expected   apparent MW</b>	48.4   49 kDa
<b>Confirmed reactivity</b>	<i>Arabidopsis thaliana</i>
<b>Predicted reactivity</b>	<i>Brassica campestris</i> , <i>Capsella rubella</i> , <i>Eutrema salsugineum</i> , <i>Noccaea caerulea</i> Species of your interest not listed? <a href="#">Contact us</a>
<b>Not reactive in</b>	No confirmed exceptions from predicted reactivity are currently known

**application example**

40 and 20 µg of recombinant *Arabidopsis thaliana* CYCB1-1 protein were loaded/well and separated on 10 % SDS-PAGE and blotted 1h to PVDF (0.45 µm) using semi-dry transfer. Blot was blocked with 5 % milk for 2h/RT with agitation. Blot was incubated in the primary antibody at 1.8 µg/ml for 1h/RT with agitation in PBS-T. The antibody solution was decanted and the blot was rinsed briefly twice, then washed 4x in PBS-T at RT with agitation. Blot was incubated in matching secondary antibody (anti-rabbit IgG horse radish peroxidase conjugated) diluted to 1:50 000 in for 1h/RT with agitation. The blot was washed as above and developed with chemiluminescent detection reagent according to manufacture's instructions.