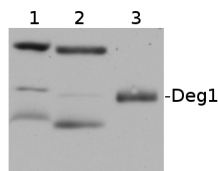


Product no **AS07 246****Anti-Deg1 | chloroplastic DegP-type serine protease 1****Product information**

<b>Immunogen</b>	Recombinant Deg1 of <i>Arabidopsis thaliana</i> <a href="#">O22609</a> , <a href="#">At3g27925</a> , overexpressed in <i>E.coli</i>
<b>Host</b>	Rabbit
<b>Clonality</b>	Polyclonal
<b>Purity</b>	Total IgG. Protein G purified in PBS pH 7.4.
<b>Format</b>	Lyophilized
<b>Quantity</b>	360 µg
<b>Reconstitution</b>	For reconstitution add 200 µl of sterile water
<b>Storage</b>	Store lyophilized/reconstituted at -20°C; once reconstituted make aliquots to avoid repeated freeze-thaw cycles. Please remember to spin the tubes briefly prior to opening them to avoid any losses that might occur from material adhering to the cap or sides of the tube.

**Application information**

<b>Recommended dilution</b>	1 : 500/5 ug thylakoid fraction (WB)
<b>Expected   apparent MW</b>	46.6   36 kDa
<b>Confirmed reactivity</b>	<i>Arabidopsis thaliana</i> , <i>Pisum sativum</i> , <i>Zea mays</i>
<b>Predicted reactivity</b>	<i>Ricinus communis</i> Species of your interest not listed? <a href="#">Contact us</a>
<b>Not reactive in</b>	No confirmed exceptions from predicted reactivity are currently known
<b>Additional information</b>	Unspecific reaction at ca. 30 kDa and ca. 85 kDa (checked by mass spec, and confirmed not to be neither Deg1 nor any other protease, The band at the right MW does contain Deg1 by our MS analysis)
<b>Selected references</b>	<a href="#">Zienkiewicz et al. (2013)</a> . Light intensity and quality stimulated Deg1-dependent cleavage of PSII components in the chloroplasts of maize. <i>Plant Physiol. &amp; Biochem.</i> March 16.

**Application example**

(1) *Pisum sativum* thylakoid fraction, (2) *Arabidopsis thaliana* thylakoid fraction, (3) recombinant Deg1 expressed in *E.coli*. Primary antibody has been used at 1 : 500 dilution with chemiluminescent detection reagent.