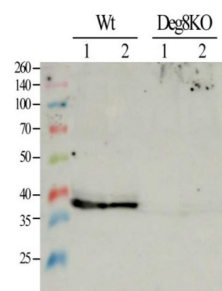


Product no **AS14 2767****Anti-Deg8 | protease Do-like 8 (chloroplastic)****Product information**

Immunogen	Recombinant mature Deg8 of <i>Arabidopsis thaliana</i> UniProt: Q9LU10 , TAIR:AT5G39830, overexpressed in <i>E.coli</i>
Host	Rabbit
Clonality	Polyclonal
Purity	Serum
Format	Lyophilized
Quantity	50 µl
Reconstitution	For reconstitution add 50 µl of sterile water
Storage	Store lyophilized/reconstituted at -20°C; once reconstituted make aliquots to avoid repeated freeze-thaw cycles. Please remember to spin the tubes briefly prior to opening them to avoid any losses that might occur from material adhering to the cap or sides of the tube.

Application information

Recommended dilution	1 : 1000 (WB)
Expected apparent MW	47 38 kDa
Confirmed reactivity	<i>Arabidopsis thaliana</i> , <i>Nicotiana tabacum</i>
Predicted reactivity	<i>Brassica pekinensis</i> , <i>Glycine max</i> , <i>Phaseolus vulgaris</i> , <i>Populus balsamifera</i> , <i>Ricinus communis</i> , <i>Solanum lycopersicum</i> , <i>Vitis vinifera</i> Species of your interest not listed? Contact us
Not reactive in	No confirmed exceptions from predicted reactivity are currently known
Additional information	Primary antibody can be also incubated using 1 hour at RT protocol
Selected references	Zhao et al. (2024) . Psb28 protein is indispensable for stable accumulation of PSII core complexes in Arabidopsis. Plant J. 2024 May 26. doi: 10.1111/tbj.16844.

application example

Total protein from *Arabidopsis thaliana* was extracted with buffer containing 0.2M tris-HCl pH 6.8, 10% Glycerol, 8% SDS, 20% -mercaptoethanol, 5M Urea. 10 µg of chlorophyll were separated on 12 % SDS-PAGE using tank transfer and blotted 1.5h to NC. Blots were blocked with 5% nonfat dry milk in TBS-T for 1h at room temperature (RT) with agitation. Blot was incubated in the primary antibody at a dilution of 1: 1000 in 5% nonfat dry milk in TBS-T over night at 40C with agitation. The antibody solution was decanted and the blot was rinsed briefly once, then washed once for 5 min and 2 times for 15 min in TBS-T at RT with agitation. Blot was incubated in secondary antibody (anti-rabbit IgG horse radish peroxidase conjugated from Sigma) diluted to 1:10000 in 5% nonfat dry milk in TBS-T for 1h at RT with agitation. The blot was washed as above and developed for 2 min with ECL according to the manufacturer instructions. Exposure time was 1 minute.

Courtesy of Leah Naveh, The Robert H. Smith Institute of Plant Sciences and Genetics in Agriculture, Israel