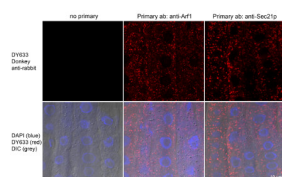


Product no **AS12 2034****Donkey anti-Rabbit IgG (H&L), DyLight® 633 conjugated, min x w/bovine, chicken, goat, guinea pig, hamster, horse, human, mouse, rat, sheep IgG****Product information**

Immunogen	Purified Rabbit IgG
Host	Donkey
Clonality	Polyclonal
Purity	Immunogen affinity purified donkey IgG.
Format	Lyophilized
Quantity	1 mg
Reconstitution	For reconstitution add 1,1 ml of sterile water, Let it stand 30 minutes at room temperature to dissolve, Prepare fresh working dilutions daily
Storage	Store lyophilized material at 2-8°C. Product is stable for 4 weeks at 2-8°C after rehydration. For long time storage after reconstitution, dilute the antibody solution with glycerol to a final concentration of 50% glycerol and store as liquid at -20°C, to prevent loss of enzymatic activity. For example, if you have reconstituted 1 mg of antibody in 1,1 ml of sterile water add 1,1 ml of glycerol. Such solution will not freeze in -20°C. If you are using a 1:5000 dilution prior to diluting with glycerol, then you would need to use a 1:2500 dilution after adding glycerol. Prepare working dilution prior to use and then discard. Be sure to mix well but without foaming.
Additional information	Conjugate is present in 10 mM Sodium Phosphate, 0.15 M Sodium Chloride, pH 7.2, 1 % (w/v) BSA, Protease/IgG free. 0.05 % (w/v) sodium azide is added as preservative. Based on immunoelectrophoresis, no reactivity is observed to: non-immunoglobulin rabbit serum proteins IgG from bovine, chicken, goat, guinea pig, hamster, horse, human, mouse, rat. Based on immunoelectrophoresis, this antibody reacts with: () chains on rabbit IgG light chains on all rabbit immunoglobulins.

Application information**Recommended dilution** 1 : 20-1 : 2000 for most applications**Additional information** **immunolocalization**

Donkey anti-rabbit conjugated to DY Light 633 in the absence of primary antibody show very little background label (right image) and binds to primary antibodies (anti-Arf1 and anti-Sec21p; two left images). The top images show only the antibody label in red and bottom images show overlay of antibody label in red with DAPI in blue and DIC/Nomarski image in grey. The material has been prepared using whole mount immunolabelling procedure of 5 day old *Arabidopsis thaliana* seedlings (Fischer, U. et al. (2006). Curr. Biol. 16, 2143–2149). Antibody dilutions: rabbit anti-sec21p (Agrisera, [AS08 327](#)) 1:1000, rabbit anti-Arf1 (Agrisera, [AS08 325](#)) 1:1000 and Agrisera Donkey anti-rabbit DY Light 633 1:100. DNA was stained with DAPI.

Courtesy: Dr. Anna Gustavsson and Prof. Markus Grebe, Umeå Plant Science Centre